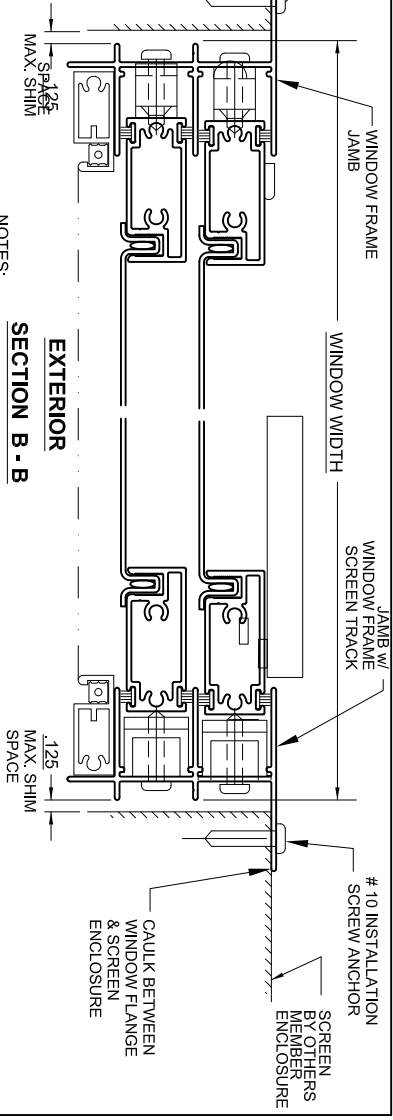


SECTION A - A



SECTION B - B

- NOTES:**
1. THE PRODUCT SHOWN HEREIN IS TO BE INSTALLED ON ENCLOSURE THAT COMPLEES WITH THE FLORIDA BUILDING CODE 8TH EDITION (2023).
 2. ENCLOSURE TO BE DESIGNED AND ANCHORED TO PROPERLY TRANSFER ALL LOADS TO STRUCTURE. ENCLOSURE IS THE RESPONSIBILITY OF THE ARCHITECT OR ENGINEER OF RECORD.
 3. WINDOW VENTS SHALL BE REMOVED WHEN 3 SECOND GUSTS VAS=75 MPH AS PER SECTION 1622.2.1 OF THE FLORIDA BUILDING CODE. REMOVABLE PANELS SHALL BE IDENTIFIED AS REMOVABLE BY A DECAL. THE IDENTIFICATION DECAL SHALL ESSENTIALLY STATE: "Removable panel shall be removed when wind speeds exceed 75 mph (34m/s)." DECALS SHALL BE PLACED SUCH THAT THE DECAL IS VISIBLE WHEN THE PANEL IS INSTALLED.
 4. AN APPROVED MEMBRANE OR MATERIAL SHALL BE PLACED BETWEEN ALL DISSIMILAR METALS TO CONTROL GALVANIC CORROSION.
 5. WINDOW FRAME AND VENT MATERIAL SHALL BE ALUMINUM ALLOY 6063-T5.
 6. USE LATEX CAULK TO SEAL BEHIND FLANGES. BETWEEN COMPONENT SEAMS AND FRAME CORNERS. APPLICATION OF LATEX CAULK MUST COMPLY WITH SEALANT MANUFACTURERS RECOMMENDATIONS.
 7. #10 SMS SCREWS INSTALLATION ANCHORS MUST BE SPACED AS FOLLOW:
HEAD AND SILL: 6" MAX. FROM CORNERS AND SPACED 14" MAX. O.C.
SIDE JAMBS: 6" MAX. FROM CORNERS AND SPACED 18" MAX. O.C.
 8. SECTION 1622.1, SCREEN ENCLOSURES FOR HVHZ ALLOW THE USE OF VINYL AND ACRYLIC.

**TEST PRESSURE RATING: ±14,4PSF
14,4PSF IS EQUIVALENT TO 75MPH. REFERENCE TEST
REPORT CTLA 1179W**

*** AS PER LATEST REVISION OF RULE 9B-72, WIND
BREAKERS ARE NO LONGER REQUIRED TO BE FBC
APPROVED.
REFERENCE 9B-72.010 (31) (b) WIND BREAKERS ARE NO
LONGER A SUB CATEGORY**

F	2023	FBC	7/27/23	ENGINEER: MARK A. SMITH	DRAWN BY: MAS	DATE: 10/30/09
E	2020	FBC	2/12/21	DISCIPLINE: CIVIL	SCALE: N.T.S.	DWG. NO. WC-DH002
D	2017	FBC	2/3/20	FL. REG. NO.: 55511	REV. LETTER: F	SHEET 1
C	2014	FBC	7/26/15			
B	2010	FBC	4/6/12			

PREPARED BY MARK SMITH, P.E. 3738 KINGSWOOD DRIVE, SARASOTA, FL 34232 PH. 941-993-9620

**WINDOW CRAFTSMEN, INC.
6031 CLARK CENTER AVE.
SARASOTA, FLORIDA 34238**

**TITLE: VINYL DOUBLE HUNG WIND BREAK
INSIDE OR OUTSIDE MOUNT
INSTALLATION DETAILS IN ALUMINUM**