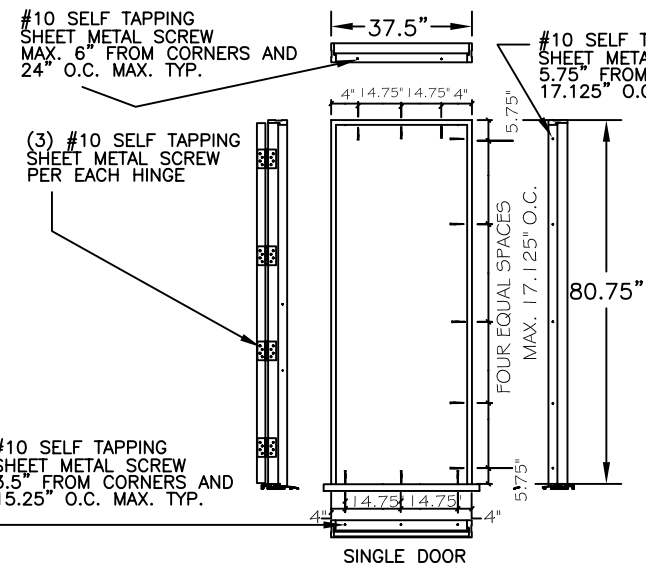
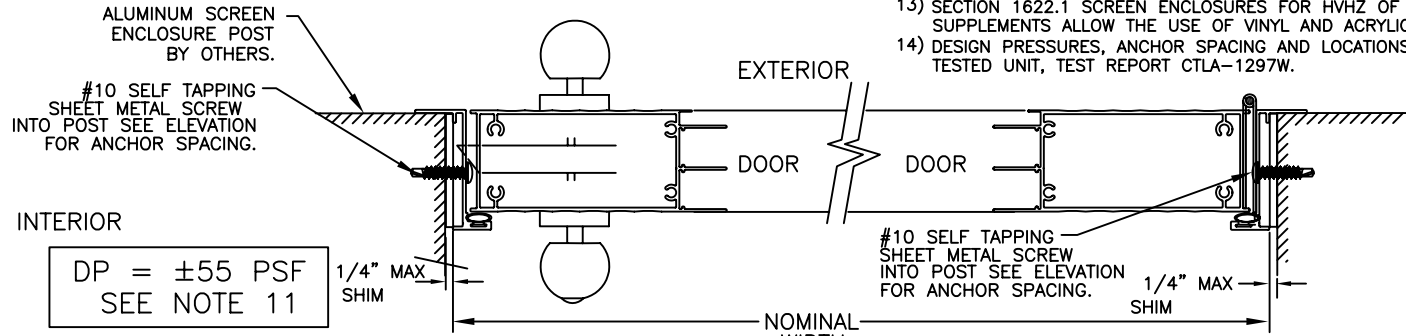


TYP. HEAD & SILL SECTION  
(OUTSWING)



SINGLE DOOR



TYP. JAMB SECTION  
(OUTSWING)

DP = ±55 PSF  
SEE NOTE 11

DP = ±14.4 PSF  
SEE NOTE 12

**OPTIONAL ACRYLIC GLAZING NOTE:**

WINDOW VENTS SHALL BE REMOVED WHEN WINDS EXCEED 75 MPH AS PER SECTION 2002.3 OF THE FLORIDA BUILDING CODE. REMOVABLE PANELS SHALL BE IDENTIFIED AS REMOVABLE BY A DECAL. THE IDENTIFICATION DECAL SHALL ESSENTIALLY STATE: "Removable panel shall be removed when wind speeds exceed 75 mph (34m/s)." DECALS SHALL BE PLACED SUCH THAT THE DECAL IS VISIBLE WHEN THE PANEL IS INSTALLED.

**NOTES:**

- 1) THE PRODUCT SHOWN HEREIN IS DESIGNED AND MANUFACTURED TO COMPLY WITH THE 2007 FLORIDA BUILDING CODE, 2009 SUPPLEMENTS.
- 2) SHIM AS REQUIRED AT EACH INSTALLATION ANCHOR WITH LOAD BEARING SHIM. MAXIMUM ALLOWABLE SHIM STACK TO BE 1/4", SHIM WHERE SPACE OF 1/16" OR GREATER OCCURS.
- 3) MATERIAL: ALUMINUM ALLOY 6063-T5.
- 4) 1/8" TEMPERED GLAZING MEETS THE REQUIREMENTS OF ASTM E 1300 CURRENT ADOPTED EDITION.
- 5) RESPONSIBILITY FOR SELECTION OF WINDOW PRODUCTS TO MEET ANY APPLICABLE LOCAL LAWS, BUILDING CODES, ORDINANCES OR OTHER SAFETY REQUIREMENTS REST SOLELY WITH THE ARCHITECT, BUILDING OWNER OR CONTRACTOR.
- 6) POSTS BY OTHERS - THE POSTS SUPPLIED BY OTHERS SHALL:
  - A) PROVIDE STRUCTURAL STRENGTH TO CARRY IMPOSED LOADS.
  - B) FIRMLY ANCHOR ALL FASTENERS TO CARRY STRUCTURAL LOADS.
- 7) USE FASTENER SCHEDULE ON ELEVATION VIEW.
- 8) WHERE LOCAL CODES REQUIRE A 15% WATER REQUIREMENT FOR DOORS INSTALLED INTO HABITABLE LIVING AREAS THE FOLLOWING PRESSURE WILL APPLY: POS. D.P. WILL BE CAPPED AT 19.0 PSF DUE TO 2.86 PSF TEST PRESSURE.
- 9) USE LATEX CAULK OR EQUIVALENT FOR PERIMETER SEAL AROUND BEHIND DOOR FLANGE
- 10) ALL INSTALLATION ANCHORS MUST BE MADE OF CORROSION RESISTANT MATERIAL OR COATING
- 11) PRODUCT AND INSTALLATION CONTAINED HEREIN COMPLIES CAPACITY OF POS. AND NEG. 55.0 PSF.
- 12) OPTIONAL GLAZING IS 1/8" ACRYLIC. WHEN PRODUCT IS USED WITH THIS OPTION THE MAXIMUM DESIGN PRESSURE RATING IS LIMITED TO ±14.4PSF.
- 13) SECTION 1622.1 SCREEN ENCLOSURES FOR HVHZ OF THE 2009 SUPPLEMENTS ALLOW THE USE OF VINYL AND ACRYLIC.
- 14) DESIGN PRESSURES, ANCHOR SPACING AND LOCATIONS DERIVED FROM TESTED UNIT, TEST REPORT CTLA-1297W.

WINDOW CRAFTSMEN, INC.  
6031 CLARK CENTER AVE.  
SARASOTA, FLORIDA 34238

TITLE: ALUMINUM PRIME ENTRY DOOR INSTALLATION DETAILS		
ENGINEER: MARK A. SMITH	DRAWN BY: MAS	DATE: 9/5/08
DISCIPLINE: CIVIL	SCALE: N.T.S.	DWG. NO. WCI-PD-001
FL. REG. NO.: 55511	REV. LETTER: A	SHEET 1