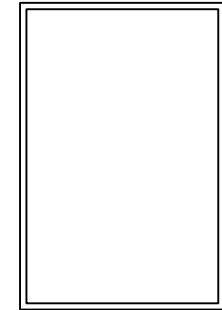


THIS CHART IS FOR MAX. ANCHOR SPACING OF 9" (MAX) ACROSS HEAD & SILL, AND 10" (MAX) ALONG JAMBS.

<u>Window Width.</u>	<u>Window Height</u>	<u>Number of Anchors</u>		<u>Design Pressure</u>	<u>Design Pressure</u>
		<u>Across Head & Sill</u>	<u>Across Jambs</u>	<u>Neg.</u>	<u>Pos.</u>
24.000	24.000	3	3	-60.00	+60.00
24.000	36.000	3	4	-60.00	+60.00
24.000	48.000	3	5	-60.00	+60.00
24.000	60.000	3	6	-60.00	+60.00
24.000	72.000	3	7	-60.00	+60.00
36.000	24.000	4	3	-60.00	+60.00
36.000	36.000	4	4	-60.00	+60.00
36.000	48.000	4	5	-60.00	+60.00
36.000	60.000	4	6	-60.00	+60.00
36.000	72.000	4	7	-60.00	+60.00
48.000	24.000	5	3	-60.00	+60.00
48.000	36.000	5	4	-60.00	+60.00
48.000	48.000	5	5	-60.00	+60.00
48.000	60.000	5	6	-60.00	+60.00
48.000	72.000	5	7	-60.00	+60.00

NOTES:

- (1) CALCULATIONS DERIVED FROM TESTED UNIT, TEST REPORT # NCTL-210-3403-1 AND NCTL-210-3403-1A.
- (2) TESTED UNIT WAS "O", 48" x 72", USING 9/16" (1/4" HS-0.090 PVB-1/4" HS) HEAT STRENGTHENED LAMINATED GLASS AND SOLUTIA PVB INTERLAYER.
- (3) THE QUANTITY OF ANCHORS ARE FOR EACH SIDE, NOT TOTAL QUANTITY.
- (4) THESE DESIGN PRESSURES ALLOW THE USE OF 9/16" (1/4" HS-0.090 PVB-1/4" HS)



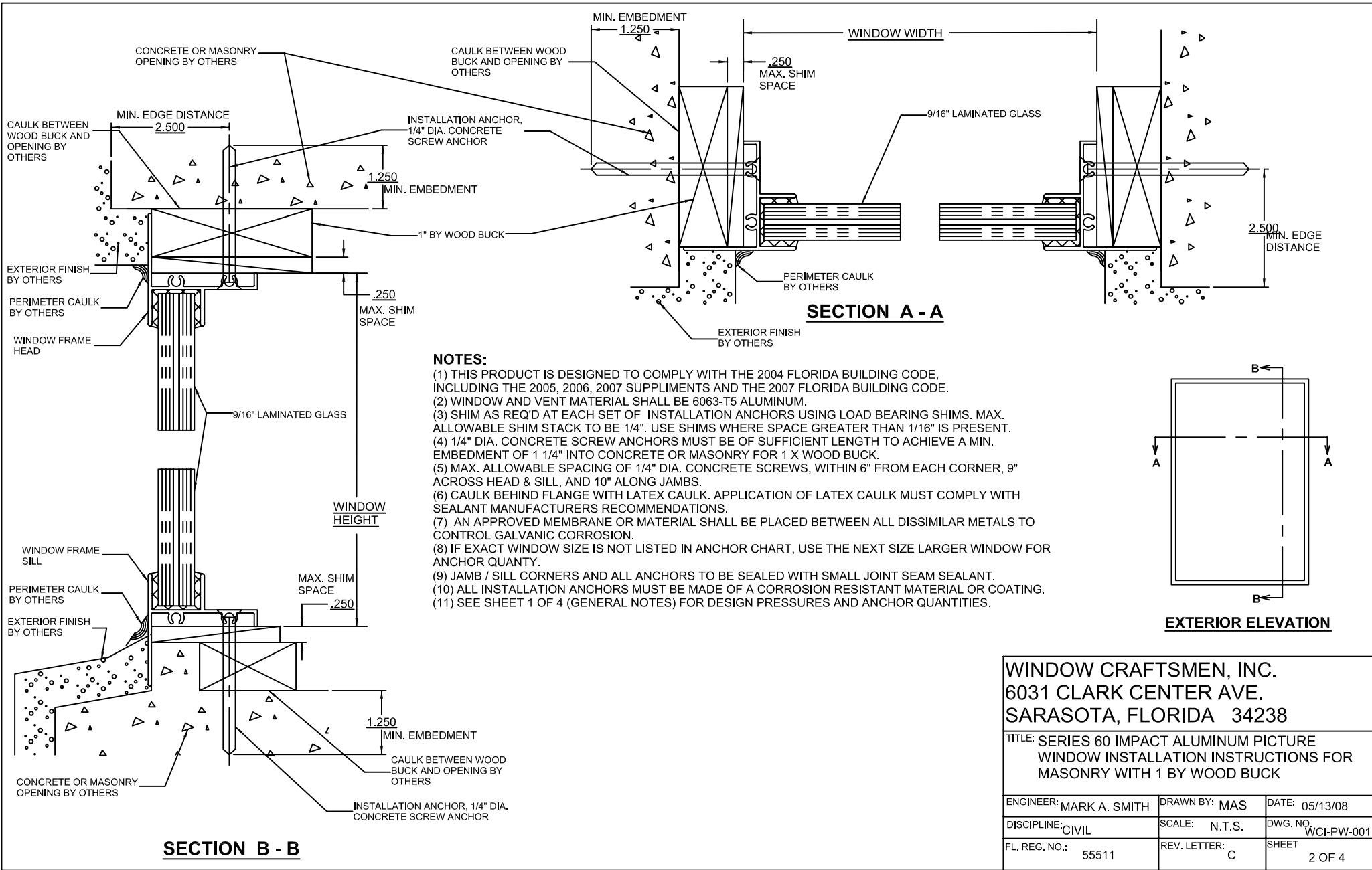
EXTERIOR ELEVATION

**WINDOW CRAFTSMEN, INC.
6031 CLARK CENTER AVE.
SARASOTA, FLORIDA 34238**

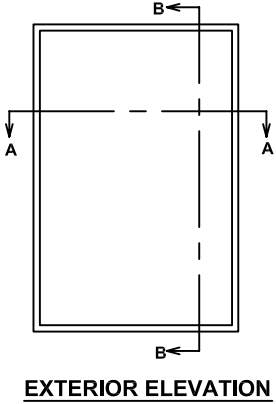
TITLE: SERIES 60 IMPACT ALUMINUM PICTURE WINDOW GENERAL NOTES FOR INSTALLATION INSTRUCTIONS (9/16" HEAT STRENGTHENED LAMINATED GLASS)

ENGINEER: MARK A. SMITH DRAWN BY: MAS DATE: 05/13/08

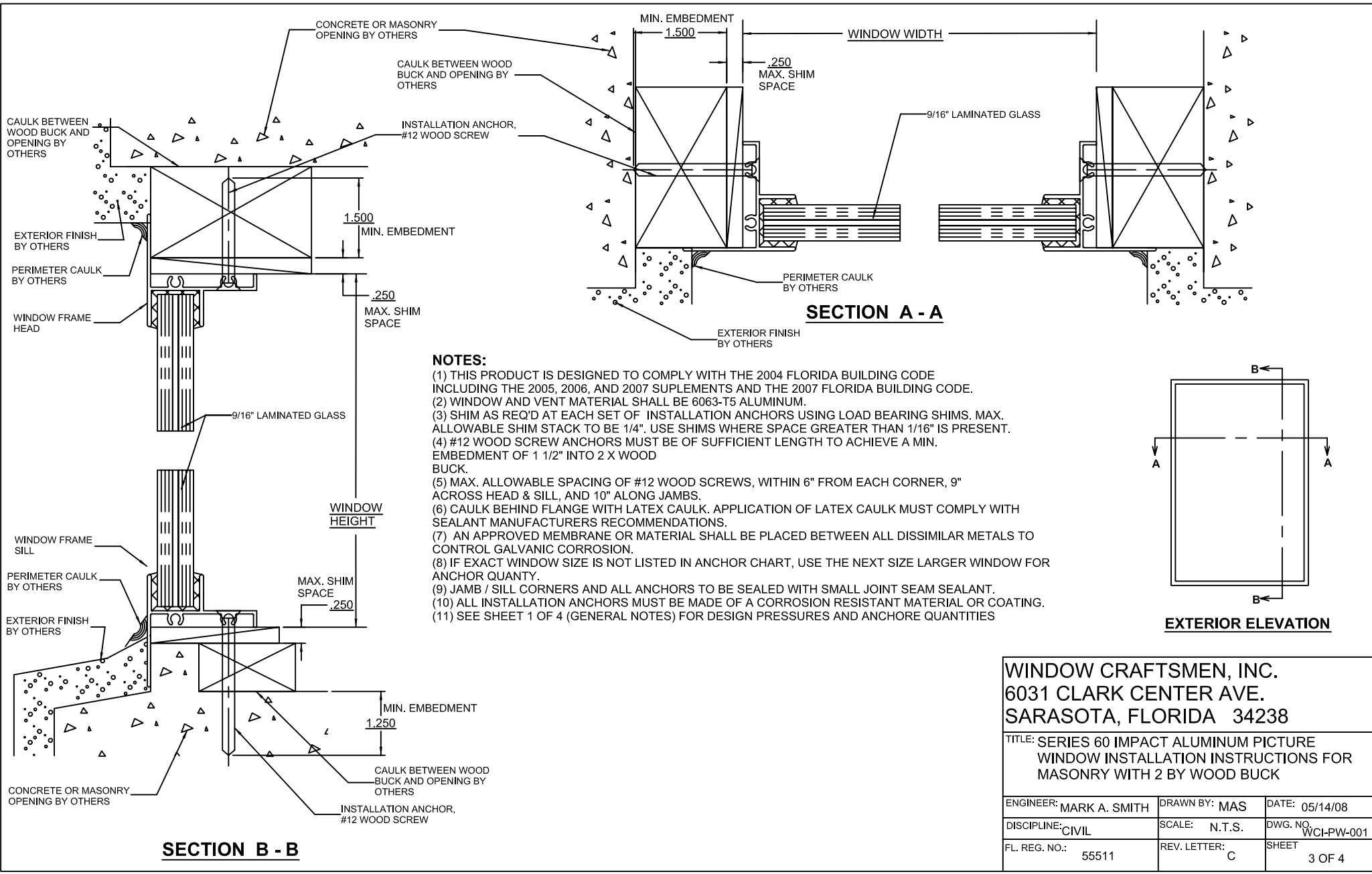
D	REVISED GLASS DESCRIPTION	11/07/08	DISCIPLINE: CIVIL	SCALE: N.T.S.	DWG. NO. WCI-PW-001
C	REVISED ANCHOR QUANTITIES	9/03/08	FL. REG. NO.: 55511	REV. LETTER: D	SHEET
B	REVISED ANCHOR QUANTITIES	7/24/08			1 OF 4



- NOTES:**
- (1) THIS PRODUCT IS DESIGNED TO COMPLY WITH THE 2004 FLORIDA BUILDING CODE, INCLUDING THE 2005, 2006, 2007 SUPPLIMENTS AND THE 2007 FLORIDA BUILDING CODE.
 - (2) WINDOW AND VENT MATERIAL SHALL BE 6063-T5 ALUMINUM.
 - (3) SHIM AS REQ'D AT EACH SET OF INSTALLATION ANCHORS USING LOAD BEARING SHIMS. MAX. ALLOWABLE SHIM STACK TO BE 1/4". USE SHIMS WHERE SPACE GREATER THAN 1/16" IS PRESENT.
 - (4) 1/4" DIA. CONCRETE SCREW ANCHORS MUST BE OF SUFFICIENT LENGTH TO ACHIEVE A MIN. EMBEDMENT OF 1 1/4" INTO CONCRETE OR MASONRY FOR 1 X WOOD BUCK.
 - (5) MAX. ALLOWABLE SPACING OF 1/4" DIA. CONCRETE SCREWS, WITHIN 6" FROM EACH CORNER, 9" ACROSS HEAD & SILL, AND 10" ALONG JAMBS.
 - (6) CAULK BEHIND FLANGE WITH LATEX CAULK. APPLICATION OF LATEX CAULK MUST COMPLY WITH SEALANT MANUFACTURERS RECOMMENDATIONS.
 - (7) AN APPROVED MEMBRANE OR MATERIAL SHALL BE PLACED BETWEEN ALL DISSIMILAR METALS TO CONTROL GALVANIC CORROSION.
 - (8) IF EXACT WINDOW SIZE IS NOT LISTED IN ANCHOR CHART, USE THE NEXT SIZE LARGER WINDOW FOR ANCHOR QUANTY.
 - (9) JAMB / SILL CORNERS AND ALL ANCHORS TO BE SEALED WITH SMALL JOINT SEAM SEALANT.
 - (10) ALL INSTALLATION ANCHORS MUST BE MADE OF A CORROSION RESISTANT MATERIAL OR COATING.
 - (11) SEE SHEET 1 OF 4 (GENERAL NOTES) FOR DESIGN PRESSURES AND ANCHOR QUANTITIES.

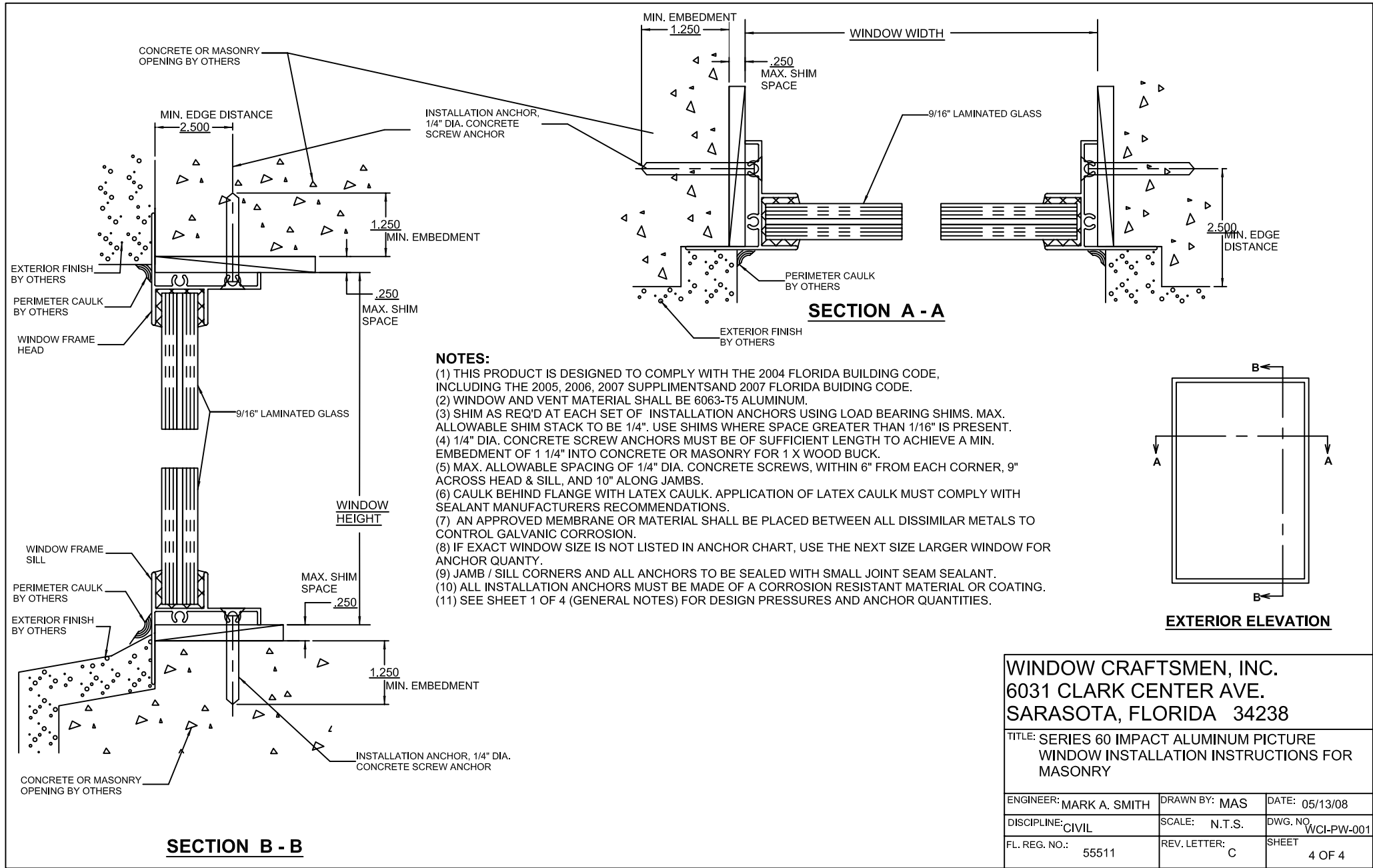


WINDOW CRAFTSMEN, INC. 6031 CLARK CENTER AVE. SARASOTA, FLORIDA 34238		
TITLE: SERIES 60 IMPACT ALUMINUM PICTURE WINDOW INSTALLATION INSTRUCTIONS FOR MASONRY WITH 1 BY WOOD BUCK		
ENGINEER: MARK A. SMITH	DRAWN BY: MAS	DATE: 05/13/08
DISCIPLINE: CIVIL	SCALE: N.T.S.	DWG. NO. WCI-PW-001
FL. REG. NO.: 55511	REV. LETTER: C	SHEET 2 OF 4



- NOTES:**
- (1) THIS PRODUCT IS DESIGNED TO COMPLY WITH THE 2004 FLORIDA BUILDING CODE INCLUDING THE 2005, 2006, AND 2007 SUPPLEMENTS AND THE 2007 FLORIDA BUILDING CODE.
 - (2) WINDOW AND VENT MATERIAL SHALL BE 6063-T5 ALUMINUM.
 - (3) SHIM AS REQ'D AT EACH SET OF INSTALLATION ANCHORS USING LOAD BEARING SHIMS. MAX. ALLOWABLE SHIM STACK TO BE 1/4". USE SHIMS WHERE SPACE GREATER THAN 1/16" IS PRESENT.
 - (4) #12 WOOD SCREW ANCHORS MUST BE OF SUFFICIENT LENGTH TO ACHIEVE A MIN. EMBEDMENT OF 1 1/2" INTO 2 X WOOD BUCK.
 - (5) MAX. ALLOWABLE SPACING OF #12 WOOD SCREWS, WITHIN 6" FROM EACH CORNER, 9" ACROSS HEAD & SILL, AND 10" ALONG JAMBS.
 - (6) CAULK BEHIND FLANGE WITH LATEX CAULK. APPLICATION OF LATEX CAULK MUST COMPLY WITH SEALANT MANUFACTURERS RECOMMENDATIONS.
 - (7) AN APPROVED MEMBRANE OR MATERIAL SHALL BE PLACED BETWEEN ALL DISSIMILAR METALS TO CONTROL GALVANIC CORROSION.
 - (8) IF EXACT WINDOW SIZE IS NOT LISTED IN ANCHOR CHART, USE THE NEXT SIZE LARGER WINDOW FOR ANCHOR QUANTITY.
 - (9) JAMB / SILL CORNERS AND ALL ANCHORS TO BE SEALED WITH SMALL JOINT SEAM SEALANT.
 - (10) ALL INSTALLATION ANCHORS MUST BE MADE OF A CORROSION RESISTANT MATERIAL OR COATING.
 - (11) SEE SHEET 1 OF 4 (GENERAL NOTES) FOR DESIGN PRESSURES AND ANCHORE QUANTITIES

WINDOW CRAFTSMEN, INC. 6031 CLARK CENTER AVE. SARASOTA, FLORIDA 34238		
TITLE: SERIES 60 IMPACT ALUMINUM PICTURE WINDOW INSTALLATION INSTRUCTIONS FOR MASONRY WITH 2 BY WOOD BUCK		
ENGINEER: MARK A. SMITH	DRAWN BY: MAS	DATE: 05/14/08
DISCIPLINE: CIVIL	SCALE: N.T.S.	DWG. NO. WCI-PW-001
FL. REG. NO.: 55511	REV. LETTER: C	SHEET 3 OF 4



- NOTES:**
- (1) THIS PRODUCT IS DESIGNED TO COMPLY WITH THE 2004 FLORIDA BUILDING CODE, INCLUDING THE 2005, 2006, 2007 SUPPLIMENTS AND 2007 FLORIDA BUILDING CODE.
 - (2) WINDOW AND VENT MATERIAL SHALL BE 6063-T5 ALUMINUM.
 - (3) SHIM AS REQ'D AT EACH SET OF INSTALLATION ANCHORS USING LOAD BEARING SHIMS. MAX. ALLOWABLE SHIM STACK TO BE 1/4". USE SHIMS WHERE SPACE GREATER THAN 1/16" IS PRESENT.
 - (4) 1/4" DIA. CONCRETE SCREW ANCHORS MUST BE OF SUFFICIENT LENGTH TO ACHIEVE A MIN. EMBEDMENT OF 1 1/4" INTO CONCRETE OR MASONRY FOR 1 X WOOD BUCK.
 - (5) MAX. ALLOWABLE SPACING OF 1/4" DIA. CONCRETE SCREWS, WITHIN 6" FROM EACH CORNER, 9" ACROSS HEAD & SILL, AND 10" ALONG JAMBS.
 - (6) CAULK BEHIND FLANGE WITH LATEX CAULK. APPLICATION OF LATEX CAULK MUST COMPLY WITH SEALANT MANUFACTURERS RECOMMENDATIONS.
 - (7) AN APPROVED MEMBRANE OR MATERIAL SHALL BE PLACED BETWEEN ALL DISSIMILAR METALS TO CONTROL GALVANIC CORROSION.
 - (8) IF EXACT WINDOW SIZE IS NOT LISTED IN ANCHOR CHART, USE THE NEXT SIZE LARGER WINDOW FOR ANCHOR QUANTY.
 - (9) JAMB / SILL CORNERS AND ALL ANCHORS TO BE SEALED WITH SMALL JOINT SEAM SEALANT.
 - (10) ALL INSTALLATION ANCHORS MUST BE MADE OF A CORROSION RESISTANT MATERIAL OR COATING.
 - (11) SEE SHEET 1 OF 4 (GENERAL NOTES) FOR DESIGN PRESSURES AND ANCHOR QUANTITIES.

WINDOW CRAFTSMEN, INC. 6031 CLARK CENTER AVE. SARASOTA, FLORIDA 34238		
TITLE: SERIES 60 IMPACT ALUMINUM PICTURE WINDOW INSTALLATION INSTRUCTIONS FOR MASONRY		
ENGINEER: MARK A. SMITH	DRAWN BY: MAS	DATE: 05/13/08
DISCIPLINE: CIVIL	SCALE: N.T.S.	DWG. NO. WCI-PW-001
FL. REG. NO.: 55511	REV. LETTER: C	SHEET 4 OF 4