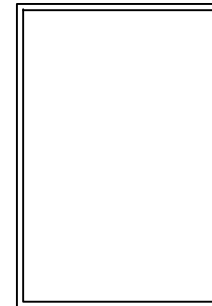


THIS CHART IS FOR MAX. ANCHOR SPACING OF 9" (MAX) ACROSS HEAD & SILL, AND 10" (MAX) ALONG JAMBS.

| <u>Window Width.</u> | <u>Window Height</u> | <u>Number of Anchors</u> | | <u>Design</u> | <u>Design</u> |
|----------------------|----------------------|-------------------------------|---------------------|----------------------|----------------------|
| | | <u>Across Head & Sill</u> | <u>Across Jambs</u> | <u>Pressure Neg.</u> | <u>Pressure Pos.</u> |
| 24.000 | 24.000 | 3 | 3 | -60.00 | +60.00 |
| 24.000 | 36.000 | 3 | 4 | -60.00 | +60.00 |
| 24.000 | 48.000 | 3 | 5 | -60.00 | +60.00 |
| 24.000 | 60.000 | 3 | 6 | -60.00 | +60.00 |
| 24.000 | 72.000 | 3 | 7 | -60.00 | +60.00 |
| 36.000 | 24.000 | 4 | 3 | -60.00 | +60.00 |
| 36.000 | 36.000 | 4 | 4 | -60.00 | +60.00 |
| 36.000 | 48.000 | 4 | 5 | -60.00 | +60.00 |
| 36.000 | 60.000 | 4 | 6 | -60.00 | +60.00 |
| 36.000 | 72.000 | 4 | 7 | -60.00 | +60.00 |
| 48.000 | 24.000 | 5 | 3 | -60.00 | +60.00 |
| 48.000 | 36.000 | 5 | 4 | -60.00 | +60.00 |
| 48.000 | 48.000 | 5 | 5 | -60.00 | +60.00 |
| 48.000 | 60.000 | 5 | 6 | -60.00 | +60.00 |
| 48.000 | 72.000 | 5 | 7 | -60.00 | +60.00 |

NOTES:

- (1) CALCULATIONS DERIVED FROM TESTED UNIT, TEST REPORT # NCTL-210-3403-1 AND NCTL-210-3403-1A AND CERTIFICATION #NAMI NI009413-R1.
- (2) TESTED UNIT WAS "O", 48" x 72", USING 9/16" (1/4" HS-0.090 PVB-1/4" HS) HEAT STRENGTHENED LAMINATED GLASS AND SOLUTIA PVB INTERLAYER.
- (3) THE QUANTITY OF ANCHORS ARE FOR EACH SIDE, NOT TOTAL QUANTITY.
- (4) THESE DESIGN PRESSURES ALLOW THE USE OF 9/16" (1/4" HS-0.090 PVB-1/4" HS)

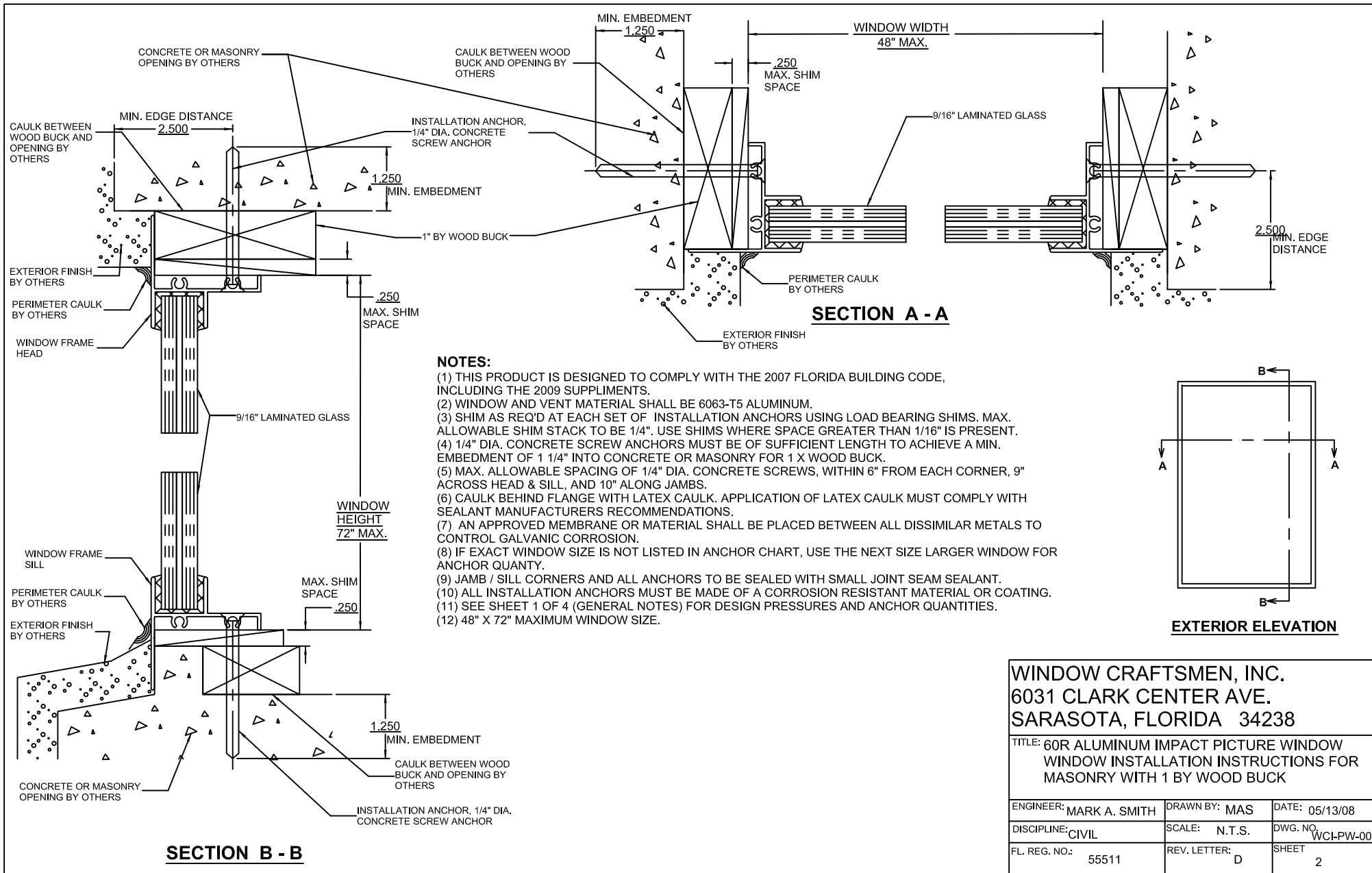


EXTERIOR ELEVATION

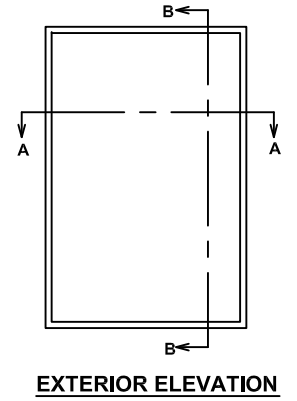
**WINDOW CRAFTSMEN, INC.
6031 CLARK CENTER AVE.
SARASOTA, FLORIDA 34238**

**TITLE: 60R ALUMINUM IMPACT PICTURE WINDOW
WINDOW GENERAL NOTES FOR
INSTALLATION INSTRUCTIONS (9/16" HEAT
STRENGTHENED LAMINATED GLASS)**

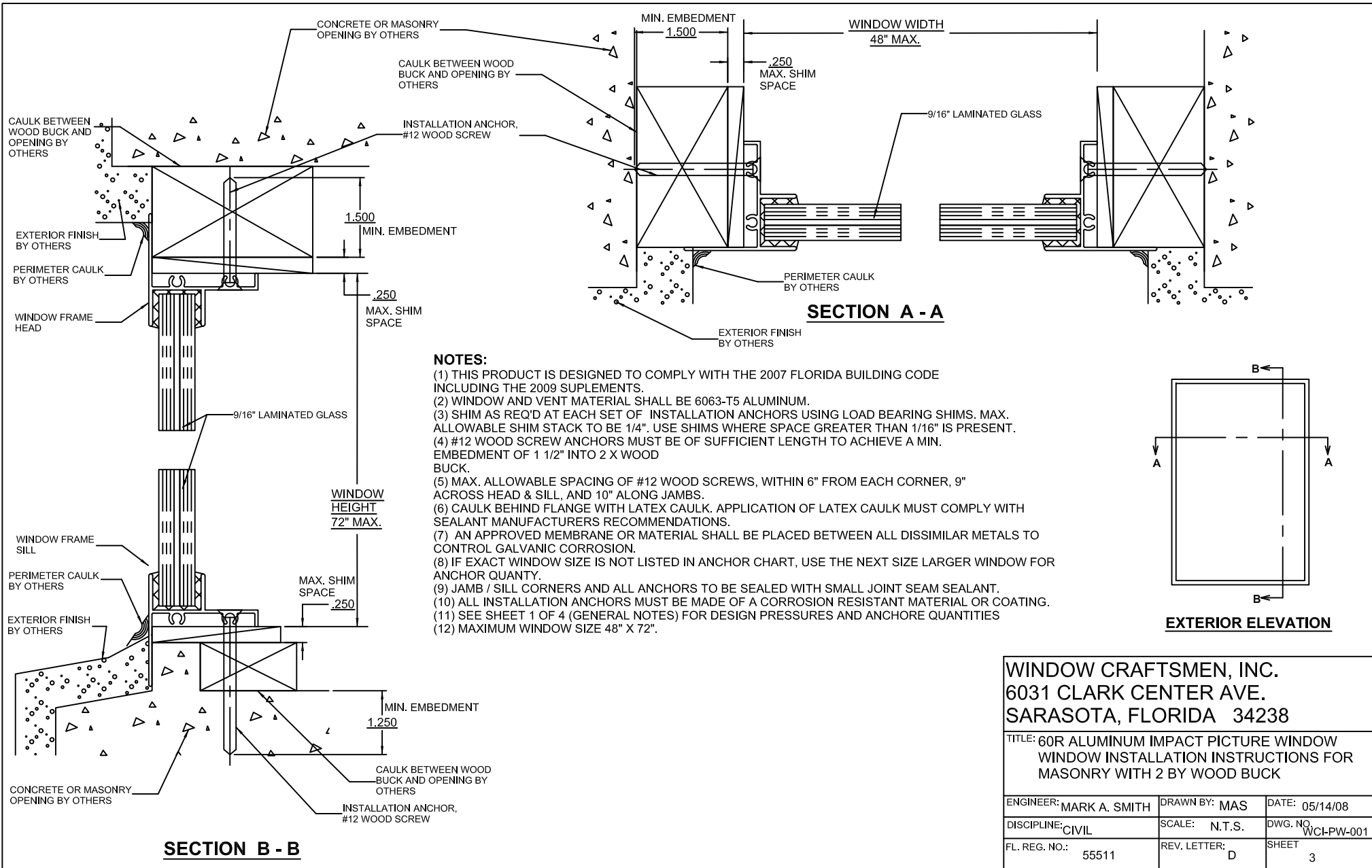
| | | | | | |
|---|---------------------------|----------|-------------------------|----------------|---------------------|
| E | ADDED NAMI | 1/3/11 | ENGINEER: MARK A. SMITH | DRAWN BY: MAS | DATE: 05/13/08 |
| D | REVISED GLASS DESCRIPTION | 11/07/08 | DISCIPLINE: CIVIL | SCALE: N.T.S. | DWG. NO. WCL-PW-001 |
| C | REVISED ANCHOR QUANTITIES | 9/03/08 | FL. REG. NO.: 55511 | REV. LETTER: E | SHEET 1 |
| B | REVISED ANCHOR QUANTITIES | 7/24/08 | | | |



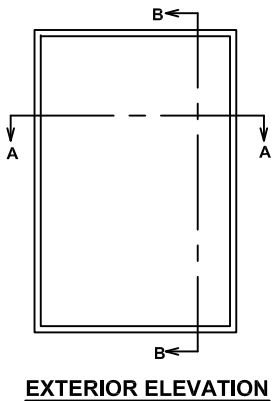
- NOTES:**
- (1) THIS PRODUCT IS DESIGNED TO COMPLY WITH THE 2007 FLORIDA BUILDING CODE, INCLUDING THE 2009 SUPPLIMENTS.
 - (2) WINDOW AND VENT MATERIAL SHALL BE 6063-T5 ALUMINUM.
 - (3) SHIM AS REQ'D AT EACH SET OF INSTALLATION ANCHORS USING LOAD BEARING SHIMS. MAX. ALLOWABLE SHIM STACK TO BE 1/4". USE SHIMS WHERE SPACE GREATER THAN 1/16" IS PRESENT.
 - (4) 1/4" DIA. CONCRETE SCREW ANCHORS MUST BE OF SUFFICIENT LENGTH TO ACHIEVE A MIN. EMBEDMENT OF 1 1/4" INTO CONCRETE OR MASONRY FOR 1 X WOOD BUCK.
 - (5) MAX. ALLOWABLE SPACING OF 1/4" DIA. CONCRETE SCREWS, WITHIN 6" FROM EACH CORNER, 9" ACROSS HEAD & SILL, AND 10" ALONG JAMBS.
 - (6) CAULK BEHIND FLANGE WITH LATEX CAULK. APPLICATION OF LATEX CAULK MUST COMPLY WITH SEALANT MANUFACTURERS RECOMMENDATIONS.
 - (7) AN APPROVED MEMBRANE OR MATERIAL SHALL BE PLACED BETWEEN ALL DISSIMILAR METALS TO CONTROL GALVANIC CORROSION.
 - (8) IF EXACT WINDOW SIZE IS NOT LISTED IN ANCHOR CHART, USE THE NEXT SIZE LARGER WINDOW FOR ANCHOR QUANTY.
 - (9) JAMB / SILL CORNERS AND ALL ANCHORS TO BE SEALED WITH SMALL JOINT SEAM SEALANT.
 - (10) ALL INSTALLATION ANCHORS MUST BE MADE OF A CORROSION RESISTANT MATERIAL OR COATING.
 - (11) SEE SHEET 1 OF 4 (GENERAL NOTES) FOR DESIGN PRESSURES AND ANCHOR QUANTITIES.
 - (12) 48" X 72" MAXIMUM WINDOW SIZE.



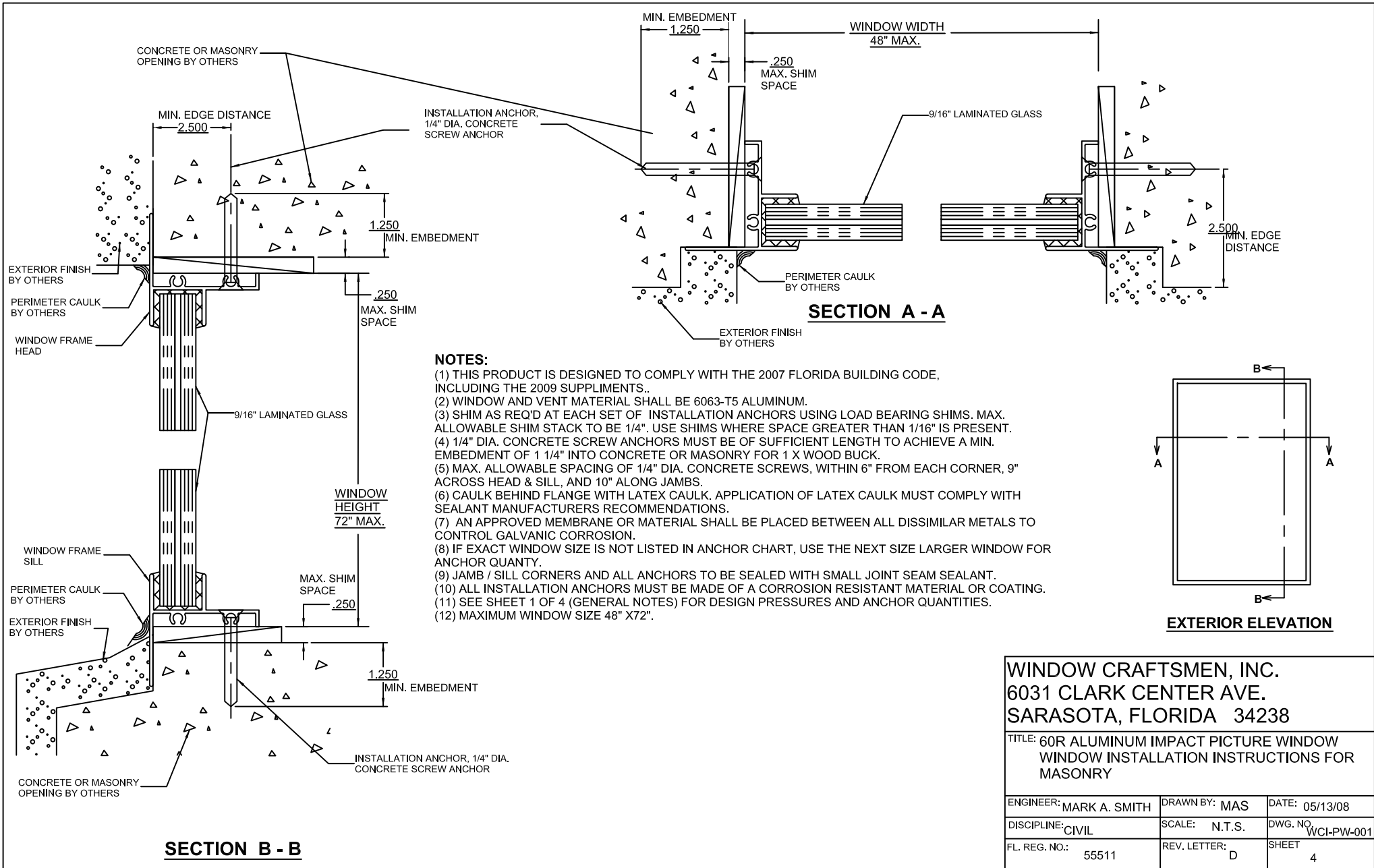
| | | |
|--|----------------|---------------------|
| WINDOW CRAFTSMEN, INC. | | |
| 6031 CLARK CENTER AVE. | | |
| SARASOTA, FLORIDA 34238 | | |
| TITLE: 60R ALUMINUM IMPACT PICTURE WINDOW WINDOW INSTALLATION INSTRUCTIONS FOR MASONRY WITH 1 BY WOOD BUCK | | |
| ENGINEER: MARK A. SMITH | DRAWN BY: MAS | DATE: 05/13/08 |
| DISCIPLINE: CIVIL | SCALE: N.T.S. | DWG. NO. WCL-PW-001 |
| FL. REG. NO.: 55511 | REV. LETTER: D | SHEET 2 |



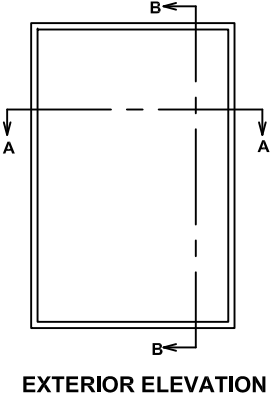
- NOTES:**
- (1) THIS PRODUCT IS DESIGNED TO COMPLY WITH THE 2007 FLORIDA BUILDING CODE INCLUDING THE 2009 SUPPLEMENTS.
 - (2) WINDOW AND VENT MATERIAL SHALL BE 6063-T5 ALUMINUM.
 - (3) SHIM AS REQ'D AT EACH SET OF INSTALLATION ANCHORS USING LOAD BEARING SHIMS. MAX. ALLOWABLE SHIM STACK TO BE 1/4". USE SHIMS WHERE SPACE GREATER THAN 1/16" IS PRESENT.
 - (4) #12 WOOD SCREW ANCHORS MUST BE OF SUFFICIENT LENGTH TO ACHIEVE A MIN. EMBEDMENT OF 1 1/2" INTO 2 X WOOD BUCK.
 - (5) MAX. ALLOWABLE SPACING OF #12 WOOD SCREWS, WITHIN 6" FROM EACH CORNER, 9" ACROSS HEAD & SILL, AND 10" ALONG JAMBS.
 - (6) CAULK BEHIND FLANGE WITH LATEX CAULK. APPLICATION OF LATEX CAULK MUST COMPLY WITH SEALANT MANUFACTURERS RECOMMENDATIONS.
 - (7) AN APPROVED MEMBRANE OR MATERIAL SHALL BE PLACED BETWEEN ALL DISSIMILAR METALS TO CONTROL GALVANIC CORROSION.
 - (8) IF EXACT WINDOW SIZE IS NOT LISTED IN ANCHOR CHART, USE THE NEXT SIZE LARGER WINDOW FOR ANCHOR QUANTY.
 - (9) JAMB / SILL CORNERS AND ALL ANCHORS TO BE SEALED WITH SMALL JOINT SEAM SEALANT.
 - (10) ALL INSTALLATION ANCHORS MUST BE MADE OF A CORROSION RESISTANT MATERIAL OR COATING.
 - (11) SEE SHEET 1 OF 4 (GENERAL NOTES) FOR DESIGN PRESSURES AND ANCHORE QUANTITIES
 - (12) MAXIMUM WINDOW SIZE 48" X 72".



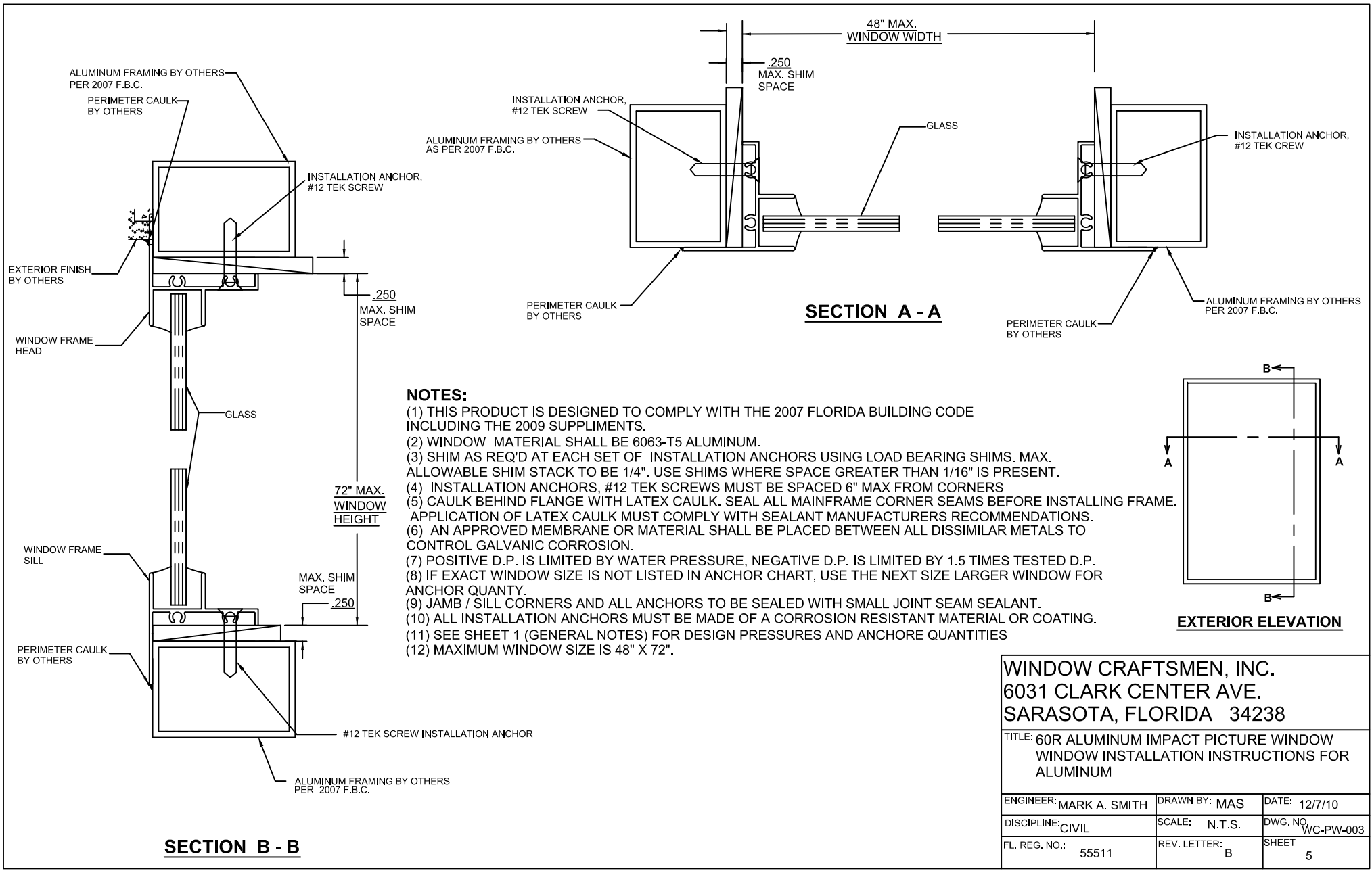
| | | |
|--|----------------|---------------------|
| WINDOW CRAFTSMEN, INC. | | |
| 6031 CLARK CENTER AVE. | | |
| SARASOTA, FLORIDA 34238 | | |
| TITLE: 60R ALUMINUM IMPACT PICTURE WINDOW WINDOW INSTALLATION INSTRUCTIONS FOR MASONRY WITH 2 BY WOOD BUCK | | |
| ENGINEER: MARK A. SMITH | DRAWN BY: MAS | DATE: 05/14/08 |
| DISCIPLINE: CIVIL | SCALE: N.T.S. | DWG. NO. WCI-PW-001 |
| FL. REG. NO.: 55511 | REV. LETTER: D | SHEET 3 |



- NOTES:**
- (1) THIS PRODUCT IS DESIGNED TO COMPLY WITH THE 2007 FLORIDA BUILDING CODE, INCLUDING THE 2009 SUPPLIMENTS..
 - (2) WINDOW AND VENT MATERIAL SHALL BE 6063-T5 ALUMINUM.
 - (3) SHIM AS REQ'D AT EACH SET OF INSTALLATION ANCHORS USING LOAD BEARING SHIMS. MAX. ALLOWABLE SHIM STACK TO BE 1/4". USE SHIMS WHERE SPACE GREATER THAN 1/16" IS PRESENT.
 - (4) 1/4" DIA. CONCRETE SCREW ANCHORS MUST BE OF SUFFICIENT LENGTH TO ACHIEVE A MIN. EMBEDMENT OF 1 1/4" INTO CONCRETE OR MASONRY FOR 1 X WOOD BUCK.
 - (5) MAX. ALLOWABLE SPACING OF 1/4" DIA. CONCRETE SCREWS, WITHIN 6" FROM EACH CORNER, 9" ACROSS HEAD & SILL, AND 10" ALONG JAMBS.
 - (6) CAULK BEHIND FLANGE WITH LATEX CAULK. APPLICATION OF LATEX CAULK MUST COMPLY WITH SEALANT MANUFACTURERS RECOMMENDATIONS.
 - (7) AN APPROVED MEMBRANE OR MATERIAL SHALL BE PLACED BETWEEN ALL DISSIMILAR METALS TO CONTROL GALVANIC CORROSION.
 - (8) IF EXACT WINDOW SIZE IS NOT LISTED IN ANCHOR CHART, USE THE NEXT SIZE LARGER WINDOW FOR ANCHOR QUANTY.
 - (9) JAMB / SILL CORNERS AND ALL ANCHORS TO BE SEALED WITH SMALL JOINT SEAM SEALANT.
 - (10) ALL INSTALLATION ANCHORS MUST BE MADE OF A CORROSION RESISTANT MATERIAL OR COATING.
 - (11) SEE SHEET 1 OF 4 (GENERAL NOTES) FOR DESIGN PRESSURES AND ANCHOR QUANTITIES.
 - (12) MAXIMUM WINDOW SIZE 48" X72".



| | | |
|--|----------------|---------------------|
| WINDOW CRAFTSMEN, INC. | | |
| 6031 CLARK CENTER AVE. | | |
| SARASOTA, FLORIDA 34238 | | |
| TITLE: 60R ALUMINUM IMPACT PICTURE WINDOW WINDOW INSTALLATION INSTRUCTIONS FOR MASONRY | | |
| ENGINEER: MARK A. SMITH | DRAWN BY: MAS | DATE: 05/13/08 |
| DISCIPLINE: CIVIL | SCALE: N.T.S. | DWG. NO. WCI-PW-001 |
| FL. REG. NO.: 55511 | REV. LETTER: D | SHEET 4 |



- NOTES:**
- (1) THIS PRODUCT IS DESIGNED TO COMPLY WITH THE 2007 FLORIDA BUILDING CODE INCLUDING THE 2009 SUPPLIMENTS.
 - (2) WINDOW MATERIAL SHALL BE 6063-T5 ALUMINUM.
 - (3) SHIM AS REQ'D AT EACH SET OF INSTALLATION ANCHORS USING LOAD BEARING SHIMS. MAX. ALLOWABLE SHIM STACK TO BE 1/4". USE SHIMS WHERE SPACE GREATER THAN 1/16" IS PRESENT.
 - (4) INSTALLATION ANCHORS, #12 TEK SCREWS MUST BE SPACED 6" MAX FROM CORNERS
 - (5) CAULK BEHIND FLANGE WITH LATEX CAULK. SEAL ALL MAINFRAME CORNER SEAMS BEFORE INSTALLING FRAME.
 - (6) AN APPROVED MEMBRANE OR MATERIAL SHALL BE PLACED BETWEEN ALL DISSIMILAR METALS TO CONTROL GALVANIC CORROSION.
 - (7) POSITIVE D.P. IS LIMITED BY WATER PRESSURE, NEGATIVE D.P. IS LIMITED BY 1.5 TIMES TESTED D.P.
 - (8) IF EXACT WINDOW SIZE IS NOT LISTED IN ANCHOR CHART, USE THE NEXT SIZE LARGER WINDOW FOR ANCHOR QUANTY.
 - (9) JAMB / SILL CORNERS AND ALL ANCHORS TO BE SEALED WITH SMALL JOINT SEAM SEALANT.
 - (10) ALL INSTALLATION ANCHORS MUST BE MADE OF A CORROSION RESISTANT MATERIAL OR COATING.
 - (11) SEE SHEET 1 (GENERAL NOTES) FOR DESIGN PRESSURES AND ANCHORE QUANTITIES
 - (12) MAXIMUM WINDOW SIZE IS 48" X 72".

| | | |
|--|----------------|--------------------|
| WINDOW CRAFTSMEN, INC. 6031 CLARK CENTER AVE. SARASOTA, FLORIDA 34238 | | |
| TITLE: 60R ALUMINUM IMPACT PICTURE WINDOW WINDOW INSTALLATION INSTRUCTIONS FOR ALUMINUM | | |
| ENGINEER: MARK A. SMITH | DRAWN BY: MAS | DATE: 12/7/10 |
| DISCIPLINE: CIVIL | SCALE: N.T.S. | DWG. NO. WC-PW-003 |
| FL. REG. NO.: 55511 | REV. LETTER: B | SHEET 5 |