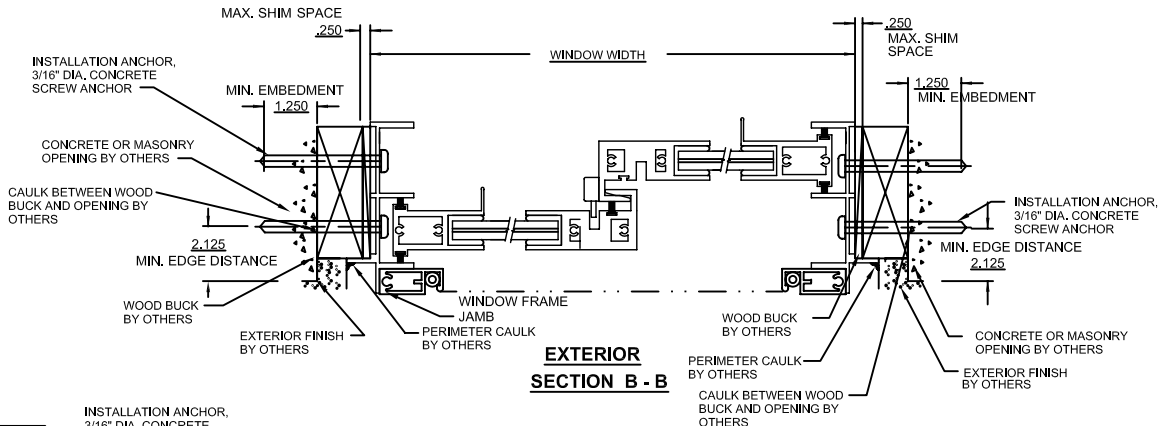


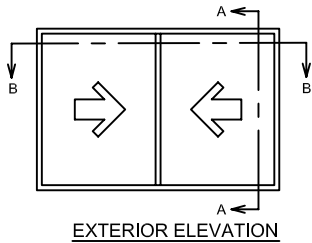
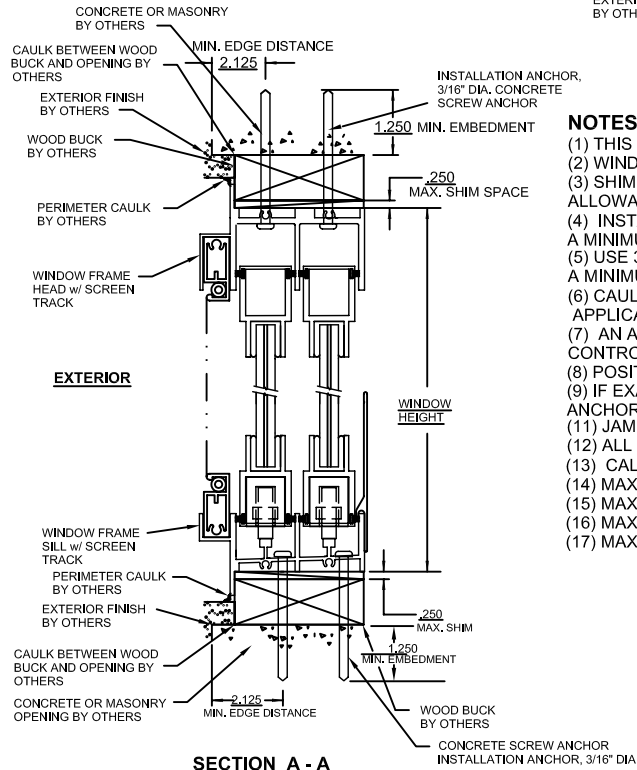
DESIGN PRESSURE RATING AND ANCHOR CHART				
WINDOW SIZE (INCHES)	PRESSURE CAPACITY IN PSF		QUANTITY OF ANCHOR LOCATIONS	
	WIDTH/HEIGHT	EXTERIOR	INTERIOR	HD/SILL
30 x 36	+80	-80	4	4
30 x 48	+80	-80	4	6
30 x 60	+80	-80	4	7
30 x 63	+80	-80	4	8
30 x 72	+80	-80	4	8
36 x 36	+80	-80	5	4
36 x 48	+80	-80	5	6
36 x 60	+80	-80	5	7
36 x 63	+80	-80	5	7
36 x 72	+80	-80	5	8
42 x 36	+80	-80	6	4
42 x 48	+80	-80	6	6
42 x 60	+80	-80	6	7
42 x 63	+80	-80	6	8
42 x 72	+80	-80	6	8
48 x 36	+80	-80	6	4
48 x 48	+80	-80	6	6
48 x 60	+80	-80	6	7
48 x 63	+80	-80	6	7
48 x 72	+80	-80	6	8
54 x 36	+80	-80	7	4
54 x 48	+80	-80	7	6
54 x 60	+80	-80	7	7
54 x 63	+80	-80	7	7
54 x 72	+80	-80	7	8
60 x 36	+80	-80	8	4
60 x 48	+80	-80	8	6
60 x 60	+80	-80	8	7
60 x 63	+80	-80	8	7
60 x 72	+80	-80	8	8
66 x 36	+80	-80	9	4
66 x 48	+80	-80	9	6
66 x 60	+80	-80	9	7
66 x 63	+80	-80	9	7
66 x 72	+80	-80	9	8
72 x 36	+80	-80	9	4
72 x 48	+80	-80	9	6
72 x 60	+80	-80	9	7
72 x 63	+80	-80	9	7
72 x 72	+80	-80	9	8

NOTE: QUANTITY IN EACH COLUMN REPRESENT NUMBER OF LOCATIONS IN EACH MEMBER. THERE ARE TWO ANCHORS IN EACH LOCATION THE QUANTITY OF LOCATIONS ARE FOR EACH SIDE NOT THE TOTAL QUANTITY



NOTES:

- (1) THIS PRODUCT IS DESIGNED TO COMPLY WITH THE 2007 FLORIDA BUILDING CODE INCLUDING THE 2009 SUPPS.
- (2) WINDOW AND VENT MATERIAL SHALL BE 6063-T5 ALUMINUM.
- (3) SHIM AS REQ'D AT EACH SET OF INSTALLATION ANCHORS USING LOAD BEARING SHIMS. MAX. ALLOWABLE SHIM STACK TO BE 1/4". USE SHIMS WHERE SPACE GREATER THAN 1/16" IS PRESENT.
- (4) INSTALLATION ANCHORS, #10 WOOD SCREWS FOR WOOD FRAMING WITH SUFFICIENT LENGTH TO ACHIEVE A MINIMUM EMBEDMENT OF 1 1/2" INTO THE WOOD FRAMING
- (5) USE 3/16" DIAMETER TAPCONS FOR CONCRETE OR MASONRY WITH A SUFFICIENT LENGTH TO ACHIEVE A MINIMUM OF 1 1/4" EMBEDMENT INTO CONCRETE OR MASONRY AND 2" MIN. EDGE DISTANCE.
- (6) CAULK BEHIND FLANGE WITH LATEX CAULK. SEAL ALL MAINFRAME CORNER SEAMS BEFORE INSTALLING FRAME. APPLICATION OF LATEX CAULK MUST COMPLY WITH SEALANT MANUFACTURERS RECOMMENDATIONS.
- (7) AN APPROVED MEMBRANE OR MATERIAL SHALL BE PLACED BETWEEN ALL DISSIMILAR METALS TO CONTROL GALVANIC CORROSION.
- (8) POSITIVE D.P. IS LIMITED BY WATER PRESSURE, NEGATIVE D.P. IS LIMITED BY 1.5 TIMES TESTED D.P.
- (9) IF EXACT WINDOW SIZE IS NOT LISTED IN ANCHOR CHART, USE THE NEXT SIZE LARGER WINDOW FOR ANCHOR QUANTITY.
- (10) JAMB / SILL CORNERS AND ALL ANCHORS TO BE SEALED WITH SMALL JOINT SEAM SEALANT.
- (11) ALL INSTALLATION ANCHORS MUST BE MADE OF A CORROSION RESISTANT MATERIAL OR COATING.
- (12) CALCULATIONS DERIVED FROM TESTED UNIT, TEST REPORT # NCTL-210-3557-3 & NCTL-210-3557-3A.
- (13) MAX. SPACING AT HEAD OR SILL CORNER IS 5".
- (14) MAX. SPACING AT JAMB CORNER IS 5"
- (15) MAX. SPACING ACROSS HEAD OR SILL IS 7-3/4".
- (16) MAX. SPACING ACROSS JAMBS IS 8-7/8".
- (17) MAX. SPACING ACROSS JAMBS IS 8-7/8".

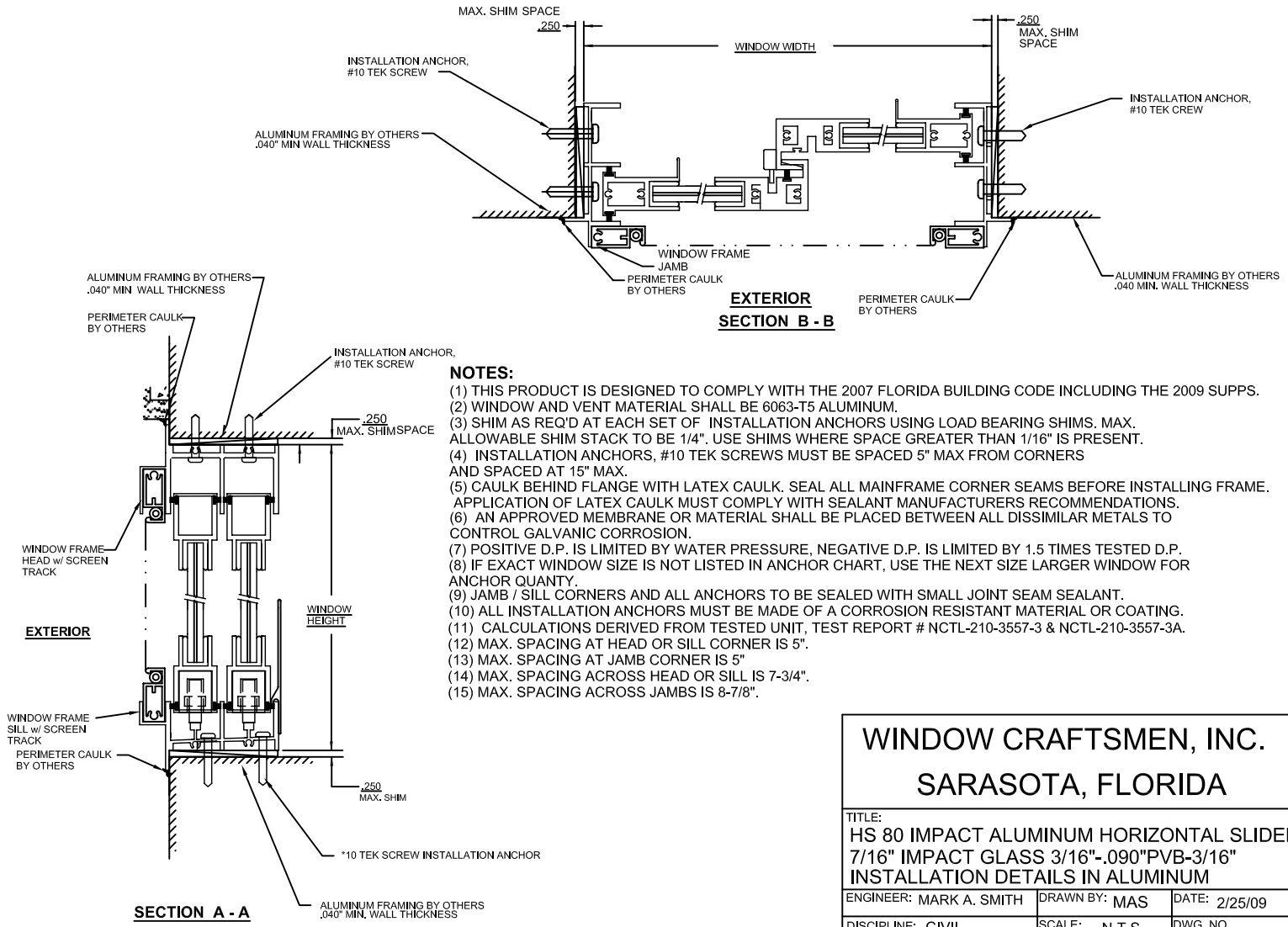
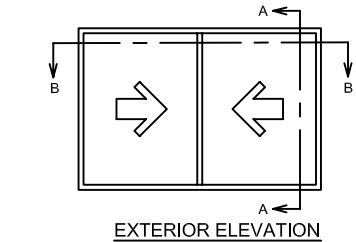


WINDOW CRAFTSMEN, INC.		
SARASOTA, FLORIDA		
TITLE: HS 80 IMPACT ALUMINUM HORIZONTAL SLIDER 7/16 LAMINATED 3/16"-0.090"PVB-3/16" INSTALLATION DETAILS IN 1 X BUCK		
ENGINEER: MARK A. SMITH	DRAWN BY: MAS	DATE: 2/25/09
DISCIPLINE: CIVIL	SCALE: N.T.S.	DWG. NO. WCL-HS008
FL. REG. NO.: 55511	REV. LETTER: A	SHEET 1

DESIGN PRESSURE RATING AND ANCHOR CHART

WINDOW SIZE (INCHES)	PRESSURE CAPACITY IN PSF		QUANTITY OF ANCHOR LOCATIONS		
	WIDTH/HEIGHT	EXTERIOR	INTERIOR	HD/SILL	JAMBS
30 x 36		+80	-80	4	4
30 x 48		+80	-80	4	6
30 x 60		+80	-80	4	7
30 x 63		+80	-80	4	7
30 x 72		+80	-80	4	8
36 x 36		+80	-80	5	4
36 x 48		+80	-80	5	6
36 x 60		+80	-80	5	7
36 x 63		+80	-80	5	7
36 x 72		+80	-80	5	8
42 x 36		+80	-80	6	4
42 x 48		+80	-80	6	6
42 x 60		+80	-80	6	7
42 x 63		+80	-80	6	7
42 x 72		+80	-80	6	8
48 x 36		+80	-80	6	4
48 x 48		+80	-80	6	6
48 x 60		+80	-80	6	7
48 x 63		+80	-80	6	7
48 x 72		+80	-80	6	8
54 x 36		+80	-80	7	4
54 x 48		+80	-80	7	6
54 x 60		+80	-80	7	7
54 x 63		+80	-80	7	7
54 x 72		+80	-80	7	8
60 x 36		+80	-80	8	4
60 x 48		+80	-80	8	6
60 x 60		+80	-80	8	7
60 x 63		+80	-80	8	7
60 x 72		+80	-80	8	8
66 x 36		+80	-80	9	4
66 x 48		+80	-80	9	6
66 x 60		+80	-80	9	7
66 x 63		+80	-80	9	7
66 x 72		+80	-80	9	8
72 x 36		+80	-80	9	4
72 x 48		+80	-80	9	6
72 x 60		+80	-80	9	7
72 x 63		+80	-80	9	7
72 x 72		+80	-80	9	8

NOTE: QUANTITY IN EACH COLUMN REPRESENT NUMBER OF LOCATIONS IN EACH MEMBER. THERE ARE TWO ANCHORS IN EACH LOCATION THE QUANTITY OF LOCATIONS ARE FOR EACH SIDE NOT THE TOTAL QUANTITY



- NOTES:**
- (1) THIS PRODUCT IS DESIGNED TO COMPLY WITH THE 2007 FLORIDA BUILDING CODE INCLUDING THE 2009 SUPPS.
 - (2) WINDOW AND VENT MATERIAL SHALL BE 6063-T5 ALUMINUM.
 - (3) SHIM AS REQ'D AT EACH SET OF INSTALLATION ANCHORS USING LOAD BEARING SHIMS. MAX. ALLOWABLE SHIM STACK TO BE 1/4". USE SHIMS WHERE SPACE GREATER THAN 1/16" IS PRESENT.
 - (4) INSTALLATION ANCHORS, #10 TEK SCREWS MUST BE SPACED 5" MAX FROM CORNERS AND SPACED AT 15" MAX.
 - (5) CAULK BEHIND FLANGE WITH LATEX CAULK. SEAL ALL MAINFRAME CORNER SEAMS BEFORE INSTALLING FRAME.
 - (6) APPLICATION OF LATEX CAULK MUST COMPLY WITH SEALANT MANUFACTURERS RECOMMENDATIONS.
 - (7) AN APPROVED MEMBRANE OR MATERIAL SHALL BE PLACED BETWEEN ALL DISSIMILAR METALS TO CONTROL GALVANIC CORROSION.
 - (8) POSITIVE D.P. IS LIMITED BY WATER PRESSURE, NEGATIVE D.P. IS LIMITED BY 1.5 TIMES TESTED D.P.
 - (9) IF EXACT WINDOW SIZE IS NOT LISTED IN ANCHOR CHART, USE THE NEXT SIZE LARGER WINDOW FOR ANCHOR QUANTITY.
 - (10) JAMB / SILL CORNERS AND ALL ANCHORS TO BE SEALED WITH SMALL JOINT SEAM SEALANT.
 - (11) ALL INSTALLATION ANCHORS MUST BE MADE OF A CORROSION RESISTANT MATERIAL OR COATING.
 - (12) CALCULATIONS DERIVED FROM TESTED UNIT, TEST REPORT # NCTL-210-3557-3 & NCTL-210-3557-3A.
 - (13) MAX. SPACING AT HEAD OR SILL CORNER IS 5"
 - (14) MAX. SPACING AT JAMB CORNER IS 5"
 - (15) MAX. SPACING ACROSS HEAD OR SILL IS 7-3/4"
 - (16) MAX. SPACING ACROSS JAMBS IS 8-7/8"

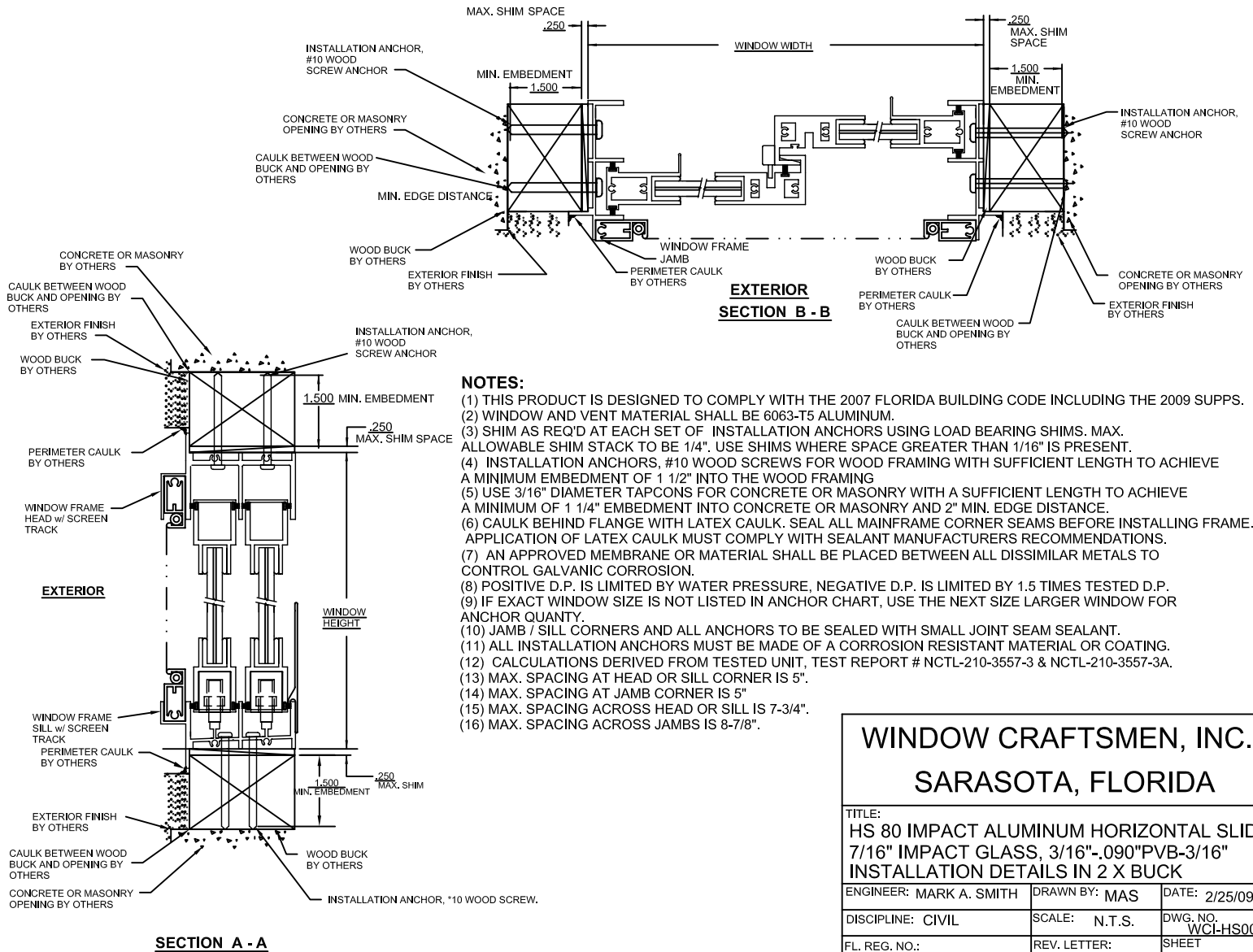
WINDOW CRAFTSMEN, INC.
SARASOTA, FLORIDA

TITLE:
HS 80 IMPACT ALUMINUM HORIZONTAL SLIDER
7/16" IMPACT GLASS 3/16"-0.090"PVB-3/16"
INSTALLATION DETAILS IN ALUMINUM

ENGINEER: MARK A. SMITH	DRAWN BY: MAS	DATE: 2/25/09
DISCIPLINE: CIVIL	SCALE: N.T.S.	DWG. NO. WCL-HS008
FL. REG. NO.: 55511	REV. LETTER: A	SHEET 2

DESIGN PRESSURE RATING AND ANCHOR CHART				
WINDOW SIZE (INCHES)	PRESSURE CAPACITY IN PSF		QUANTITY OF ANCHOR LOCATIONS	
	WIDTH/HEIGHT	EXTERIOR	INTERIOR	HD/SILL JAMBS
30 x 36	+80	-80	4	4
30 x 48	+80	-80	4	6
30 x 60	+80	-80	4	7
30 x 63	+80	-80	4	7
30 x 72	+80	-80	4	8
36 x 36	+80	-80	5	4
36 x 48	+80	-80	5	6
36 x 60	+80	-80	5	7
36 x 63	+80	-80	5	7
36 x 72	+80	-80	5	8
42 x 36	+80	-80	6	4
42 x 48	+80	-80	6	6
42 x 60	+80	-80	6	7
42 x 63	+80	-80	6	7
42 x 72	+80	-80	6	8
48 x 36	+80	-80	6	4
48 x 48	+80	-80	6	6
48 x 60	+80	-80	6	7
48 x 63	+80	-80	6	7
48 x 72	+80	-80	6	8
54 x 36	+80	-80	7	4
54 x 48	+80	-80	7	6
54 x 60	+80	-80	7	7
54 x 63	+80	-80	7	7
54 x 72	+80	-80	7	8
60 x 36	+80	-80	8	4
60 x 48	+80	-80	8	6
60 x 60	+80	-80	8	7
60 x 63	+80	-80	8	7
60 x 72	+80	-80	8	8
66 x 36	+80	-80	9	4
66 x 48	+80	-80	9	6
66 x 60	+80	-80	9	7
66 x 63	+80	-80	9	7
66 x 72	+80	-80	9	8
72 x 36	+80	-80	9	4
72 x 48	+80	-80	9	6
72 x 60	+80	-80	9	7
72 x 63	+80	-80	9	7
72 x 72	+80	-80	9	8

NOTE: QUANTITY IN EACH COLUMN REPRESENT NUMBER OF LOCATIONS IN EACH MEMBER. THERE ARE TWO ANCHORS IN EACH LOCATION THE QUANTITY OF LOCATIONS ARE FOR EACH SIDE NOT THE TOTAL QUANTITY



- NOTES:**
- (1) THIS PRODUCT IS DESIGNED TO COMPLY WITH THE 2007 FLORIDA BUILDING CODE INCLUDING THE 2009 SUPPS.
 - (2) WINDOW AND VENT MATERIAL SHALL BE 6063-T5 ALUMINUM.
 - (3) SHIM AS REQ'D AT EACH SET OF INSTALLATION ANCHORS USING LOAD BEARING SHIMS. MAX. ALLOWABLE SHIM STACK TO BE 1/4". USE SHIMS WHERE SPACE GREATER THAN 1/16" IS PRESENT.
 - (4) INSTALLATION ANCHORS, #10 WOOD SCREWS FOR WOOD FRAMING WITH SUFFICIENT LENGTH TO ACHIEVE A MINIMUM EMBEDMENT OF 1 1/2" INTO THE WOOD FRAMING
 - (5) USE 3/16" DIAMETER TAPCONS FOR CONCRETE OR MASONRY WITH A SUFFICIENT LENGTH TO ACHIEVE A MINIMUM OF 1 1/4" EMBEDMENT INTO CONCRETE OR MASONRY AND 2" MIN. EDGE DISTANCE.
 - (6) CAULK BEHIND FLANGE WITH LATEX CAULK. SEAL ALL MAINFRAME CORNER SEAMS BEFORE INSTALLING FRAME. APPLICATION OF LATEX CAULK MUST COMPLY WITH SEALANT MANUFACTURERS RECOMMENDATIONS.
 - (7) AN APPROVED MEMBRANE OR MATERIAL SHALL BE PLACED BETWEEN ALL DISSIMILAR METALS TO CONTROL GALVANIC CORROSION.
 - (8) POSITIVE D.P. IS LIMITED BY WATER PRESSURE, NEGATIVE D.P. IS LIMITED BY 1.5 TIMES TESTED D.P.
 - (9) IF EXACT WINDOW SIZE IS NOT LISTED IN ANCHOR CHART, USE THE NEXT SIZE LARGER WINDOW FOR ANCHOR QUANTITY.
 - (10) JAMB / SILL CORNERS AND ALL ANCHORS TO BE SEALED WITH SMALL JOINT SEAM SEALANT.
 - (11) ALL INSTALLATION ANCHORS MUST BE MADE OF A CORROSION RESISTANT MATERIAL OR COATING.
 - (12) CALCULATIONS DERIVED FROM TESTED UNIT, TEST REPORT # NCTL-210-3557-3 & NCTL-210-3557-3A.
 - (13) MAX. SPACING AT HEAD OR SILL CORNER IS 5".
 - (14) MAX. SPACING AT JAMB CORNER IS 5"
 - (15) MAX. SPACING ACROSS HEAD OR SILL IS 7-3/4".
 - (16) MAX. SPACING ACROSS JAMBS IS 8-7/8".

WINDOW CRAFTSMEN, INC.		
SARASOTA, FLORIDA		
TITLE: HS 80 IMPACT ALUMINUM HORIZONTAL SLIDER 7/16" IMPACT GLASS, 3/16"-,090"PVB-3/16" INSTALLATION DETAILS IN 2 X BUCK		
ENGINEER: MARK A. SMITH	DRAWN BY: MAS	DATE: 2/25/09
DISCIPLINE: CIVIL	SCALE: N.T.S.	DWG. NO. WCI-HS008
FL. REG. NO.: 55511	REV. LETTER: A	SHEET 3