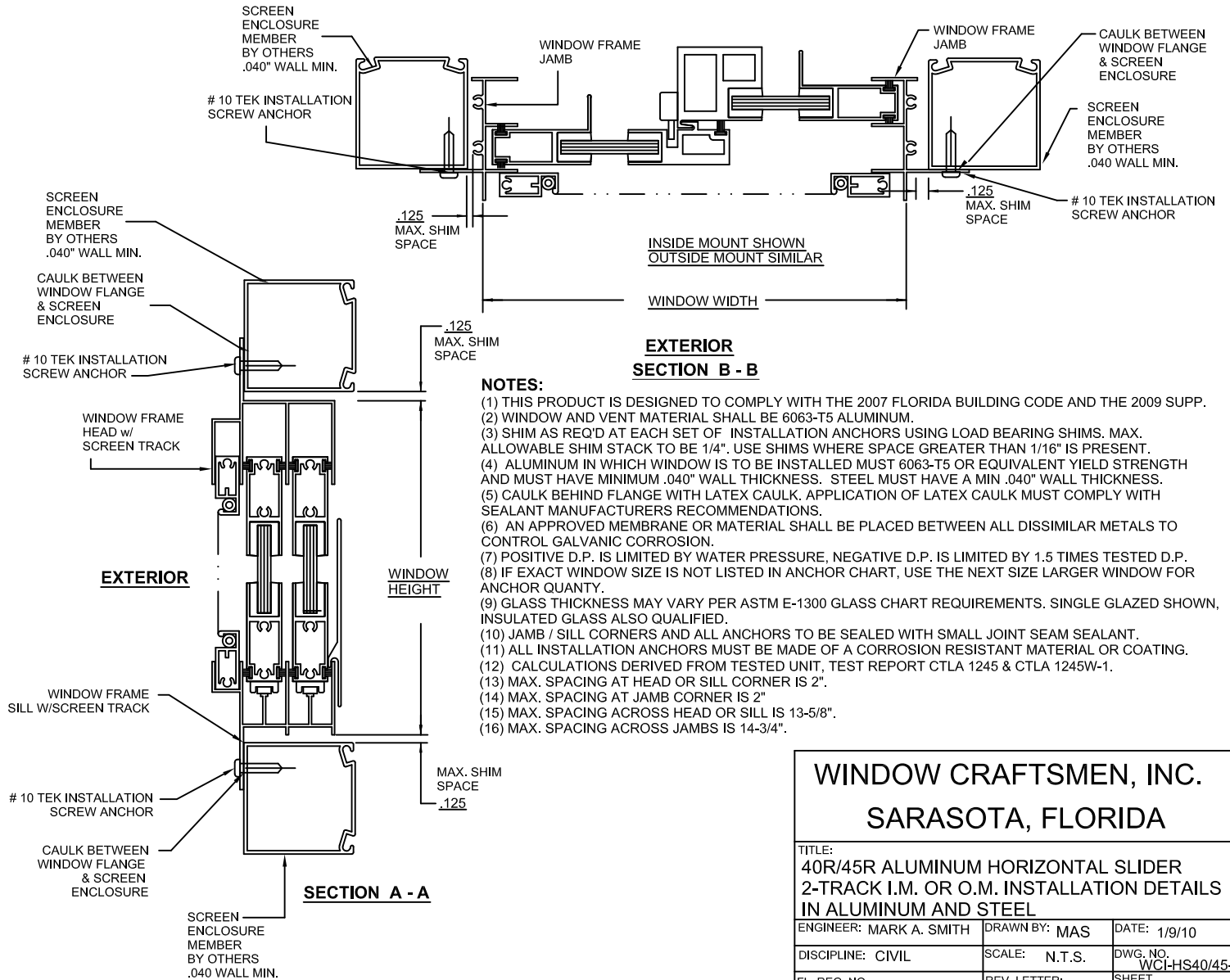
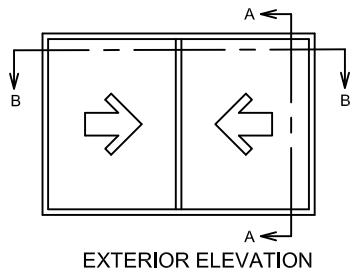


**DESIGN PRESSURE RATING AND ANCHOR CHART**

WINDOW SIZE (INCHES)	PRESSURE CAPACITY IN PSF		QUANTITY OF ANCHORS	
	EXTERIOR	INTERIOR	HD/SILL	JAMBS
30 x 36	+45	-45	3	3
30 x 48	+45	-45	3	4
30 x 60	+45	-45	3	6
30 x 63	+45	-45	3	6
30 x 72	+45	-40	3	6
36 x 36	+45	-45	4	3
36 x 48	+45	-45	4	4
36 x 60	+45	-45	4	4
36 x 63	+45	-45	4	6
36 x 72	+40	-40	4	6
42 x 36	+45	-45	4	3
42 x 48	+45	-45	4	4
42 x 60	+45	-45	4	4
42 x 63	+45	-45	4	6
42 x 72	+40	-40	4	6
48 x 36	+45	-45	5	3
48 x 48	+45	-45	5	4
48 x 60	+45	-45	5	4
48 x 63	+45	-45	5	6
48 x 72	+40	-40	5	6
54 x 36	+45	-45	5	3
54 x 48	+45	-45	5	4
54 x 60	+45	-45	5	4
54 x 63	+45	-45	5	6
54 x 72	+40	-40	5	6
60 x 36	+45	-45	6	3
60 x 48	+45	-45	6	4
60 x 60	+45	-45	6	4
60 x 63	+45	-45	6	6
60 x 72	+40	-40	6	6
66 x 36	+45	-45	6	3
66 x 48	+45	-45	6	4
66 x 60	+45	-45	6	4
66 x 63	+45	-45	6	6
66 x 72	+40	-40	6	6
72 x 36	+45	-45	6	3
72 x 48	+45	-45	6	4
72 x 60	+45	-45	6	4
72 x 63	+45	-45	6	6
72 x 72	+40	-40	6	6

NOTE: ANCHOR QUANTITIES ARE NOT TOTAL QUANTITIES BUT QUANTITIES PER SIDE



**WINDOW CRAFTSMEN, INC.**  
**SARASOTA, FLORIDA**

TITLE:  
**40R/45R ALUMINUM HORIZONTAL SLIDER 2-TRACK I.M. OR O.M. INSTALLATION DETAILS IN ALUMINUM AND STEEL**

ENGINEER: MARK A. SMITH    DRAWN BY: MAS    DATE: 1/9/10

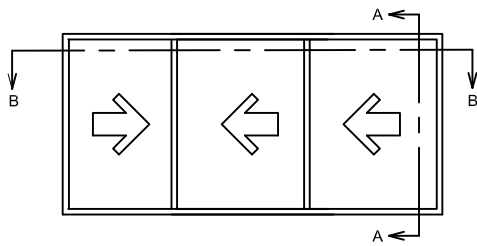
DISCIPLINE: CIVIL    SCALE: N.T.S.    DWG. NO. WCI-HS40/45-2

FL. REG. NO.: 55511    REV. LETTER: 0    SHEET 1

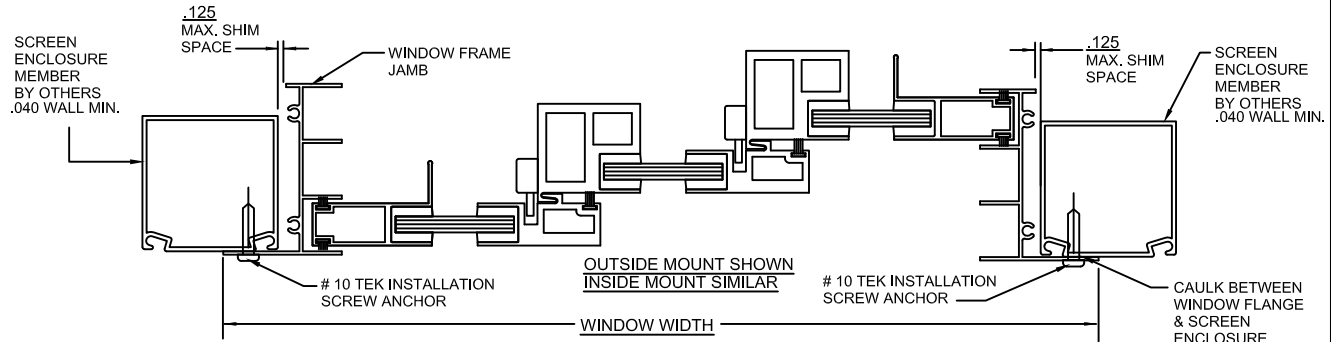
### DESIGN PRESSURE RATING AND ANCHOR CHART

WINDOW SIZE (INCHES)	PRESSURE CAPACITY IN PSF		QUANTITY OF ANCHORS	
	EXTERIOR	INTERIOR	HD/SILL	JAMBS
54 x 36	+45	-45	5	3
54 x 48	+45	-45	5	4
54 x 60	+45	-45	5	5
54 x 63	+45	-45	5	5
54 x 72	+40	-40	5	6
60 x 36	+45	-45	6	3
60 x 48	+45	-45	6	4
60 x 60	+45	-45	6	5
60 x 63	+45	-45	6	5
60 x 72	+40	-40	6	6
66 x 36	+45	-45	6	3
66 x 48	+45	-45	6	4
66 x 60	+45	-45	6	5
66 x 63	+45	-45	6	5
66 x 72	+40	-40	6	6
72 x 36	+45	-45	6	3
72 x 48	+45	-45	6	4
72 x 60	+45	-45	6	5
72 x 63	+45	-45	6	5
72 x 72	+40	-40	6	6
78 x 36	+45	-45	7	3
78 x 48	+45	-45	7	4
78 x 60	+45	-45	7	5
78 x 63	+45	-45	7	5
78 x 72	+40	-40	7	6
84 x 36	+45	-45	7	3
84 x 48	+45	-45	7	4
84 x 60	+45	-45	7	5
84 x 63	+45	-45	7	5
84 x 72	+40	-40	7	6
96 x 36	+45	-45	8	3
96 x 48	+45	-45	8	4
96 x 60	+45	-45	8	5
96 x 63	+45	-45	8	5
96 x 72	+40	-40	8	6
108 x 36	+45	-45	9	3
108 x 48	+45	-45	9	4
108 x 60	+45	-45	9	5
108 x 63	+45	-45	9	5
108 x 72	+40	-40	9	6

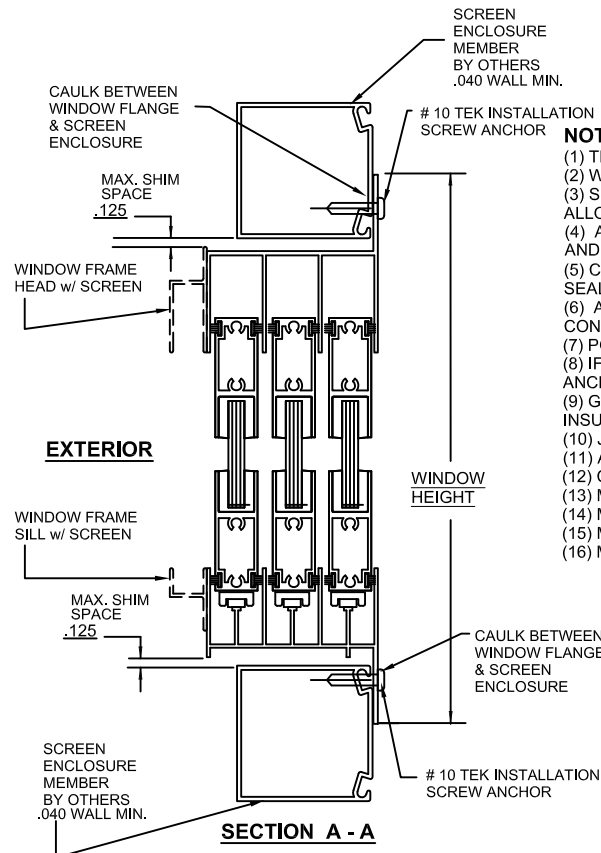
NOTE: ANCHOR QUANTITIES ARE NOT TOTAL QUANTITIES BUT QUANTITIES PER SIDE



EXTERIOR ELEVATION



EXTERIOR SECTION B - B



SECTION A - A

**NOTES:**

- (1) THIS PRODUCT IS DESIGNED TO COMPLY WITH THE 2007 FLORIDA BUILDING CODE AND THE 2009 SUPP.
- (2) WINDOW AND VENT MATERIAL SHALL BE 6063-T5 ALUMINUM.
- (3) SHIM AS REQ'D AT EACH SET OF INSTALLATION ANCHORS USING LOAD BEARING SHIMS. MAX. ALLOWABLE SHIM STACK TO BE 1/4". USE SHIMS WHERE SPACE GREATER THAN 1/16" IS PRESENT.
- (4) ALUMINUM IN WHICH WINDOW IS TO BE INSTALLED MUST 6063-T5 OR EQUIVALENT YIELD STRENGTH AND MUST HAVE MINIMUM .040" WALL THICKNESS. STEEL MUST HAVE A .040" MIN. WALL THICKNESS.
- (5) CAULK BEHIND FLANGE WITH LATEX CAULK. APPLICATION OF LATEX CAULK MUST COMPLY WITH SEALANT MANUFACTURERS RECOMMENDATIONS.
- (6) AN APPROVED MEMBRANE OR MATERIAL SHALL BE PLACED BETWEEN ALL DISSIMILAR METALS TO CONTROL GALVANIC CORROSION.
- (7) POSITIVE D.P. IS LIMITED BY WATER PRESSURE, NEGATIVE D.P. IS LIMITED BY 1.5 TIMES TESTED D.P.
- (8) IF EXACT WINDOW SIZE IS NOT LISTED IN ANCHOR CHART, USE THE NEXT SIZE LARGER WINDOW FOR ANCHOR QUANTITY.
- (9) GLASS THICKNESS MAY VARY PER ASTM E-1300 GLASS CHART REQUIREMENTS. SINGLE GLAZED SHOWN, INSULATED GLASS ALSO QUALIFIED.
- (10) JAMB / SILL CORNERS AND ALL ANCHORS TO BE SEALED WITH SMALL JOINT SEAM SEALANT.
- (11) ALL INSTALLATION ANCHORS MUST BE MADE OF A CORROSION RESISTANT MATERIAL OR COATING.
- (12) CALCULATIONS DERIVED FROM TESTED UNIT, TEST REPORT CTLA 1245W & CTLA 1245W-1.
- (13) MAX. SPACING AT HEAD OR SILL CORNER IS 2".
- (14) MAX. SPACING AT JAMB CORNER IS 2"
- (15) MAX. SPACING ACROSS HEAD OR SILL IS 13-5/8".
- (16) MAX. SPACING ACROSS JAMBS IS 14-3/4".

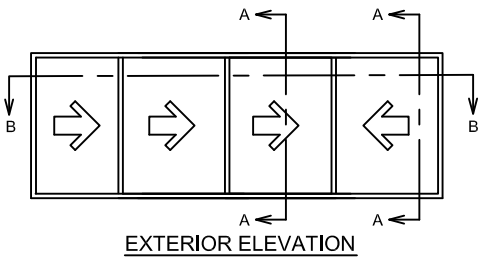
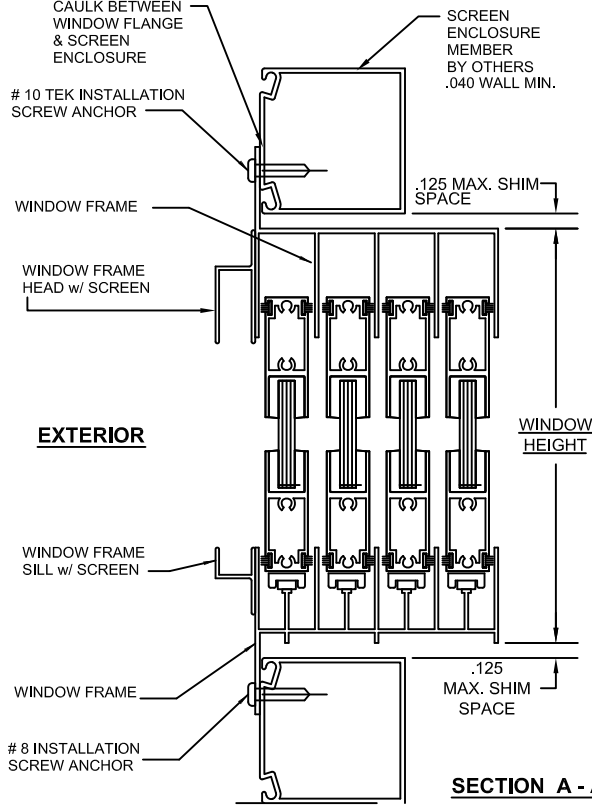
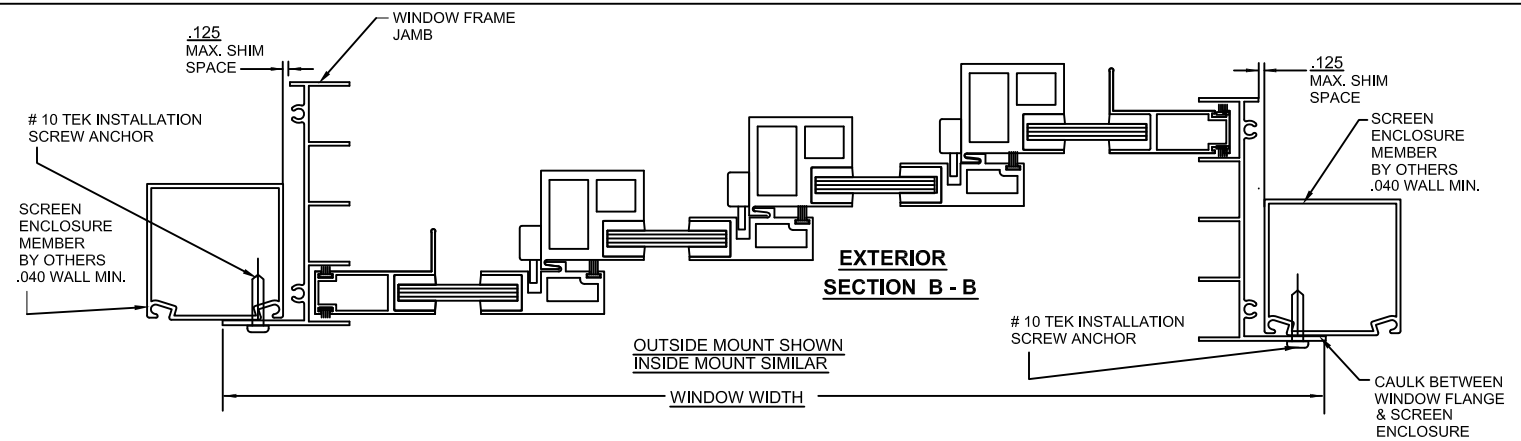
## WINDOW CRAFTSMEN, INC. SARASOTA, FLORIDA

TITLE: 40R/45R ALUMINUM HORIZONTAL SLIDER 3-TRACK I.M. OR O.M. INSTALLATION DETAILS IN ALUMINUM AND STEEL		
ENGINEER: MARK A. SMITH	DRAWN BY: MAS	DATE: 2/9/10
DISCIPLINE: CIVIL	SCALE: N.T.S.	DWG. NO. WCI-HS40/45-1
FL. REG. NO.: 55511	REV. LETTER: 0	SHEET 2

### DESIGN PRESSURE RATING AND ANCHOR CHART

WINDOW SIZE (INCHES) WIDTH/HEIGHT	PRESSURE CAPACITY IN PSF		QUANTITY OF ANCHORS	
	EXTERIOR	INTERIOR	HD/SILL	JAMBS
54 x 36	+45	-45	5	3
54 x 48	+45	-45	5	4
54 x 60	+45	-45	5	5
54 x 63	+45	-45	5	5
54 x 72	+40	-40	5	6
66 x 36	+45	-45	6	3
66 x 48	+45	-45	6	4
66 x 60	+45	-45	6	5
66 x 63	+45	-45	6	5
66 x 72	+40	-40	6	6
78 x 36	+45	-45	7	3
78 x 48	+45	-45	7	4
78 x 60	+45	-45	7	5
78 x 63	+45	-45	7	5
78 x 72	+40	-40	7	6
96 x 36	+45	-45	8	3
96 x 48	+45	-45	8	4
96 x 60	+45	-45	8	5
96 x 63	+45	-45	8	5
96 x 72	+40	-40	8	6
109 x 36	+45	-45	9	3
109 x 48	+45	-45	9	4
109 x 60	+45	-45	9	5
109 x 63	+45	-45	9	5
109 x 72	+40	-40	9	6
118 x 36	+45	-45	10	3
118 x 48	+45	-45	10	4
118 x 60	+45	-45	10	5
118 x 63	+45	-45	10	5
118 x 72	+40	-40	10	6
128 x 36	+45	-45	11	3
128 x 48	+45	-45	11	4
128 x 60	+45	-45	11	5
128 x 63	+45	-45	11	5
128 x 72	+40	-40	11	6
144 x 36	+45	-45	12	3
144 x 48	+45	-45	12	4
144 x 60	+45	-45	12	5
144 x 63	+45	-45	12	5
144 x 72	+40	-40	12	6

NOTE: ANCHOR QUANTITIES ARE NOT TOTAL QUANTITIES BUT QUANTITIES PER SIDE



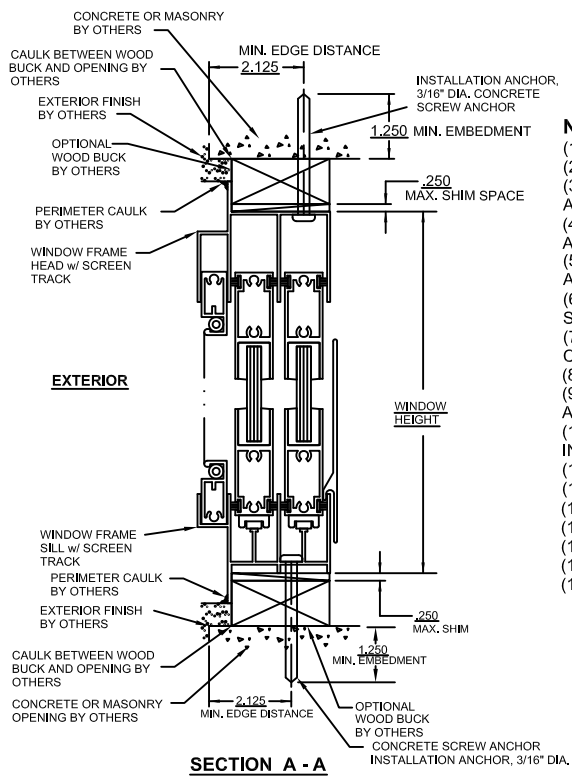
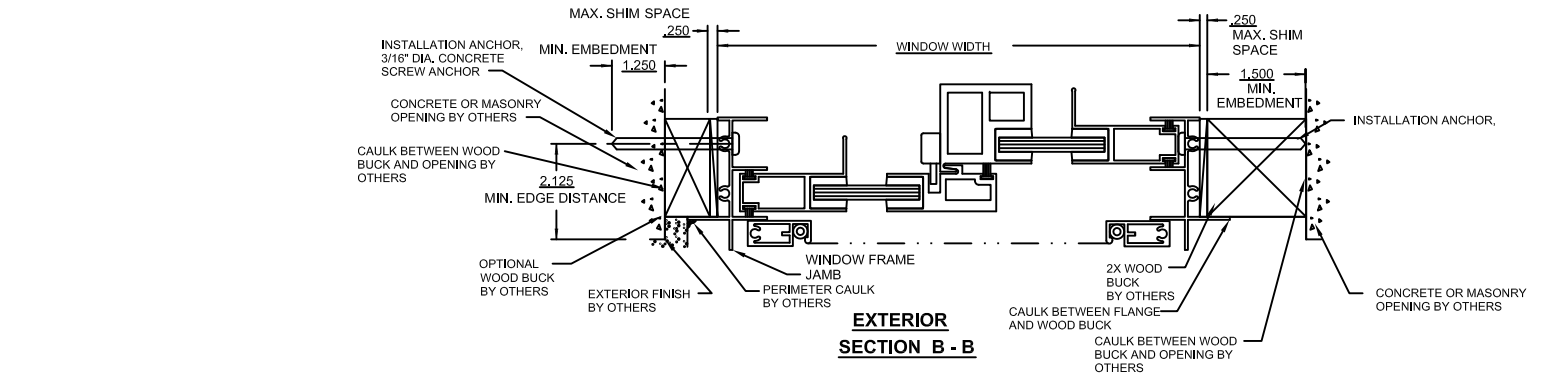
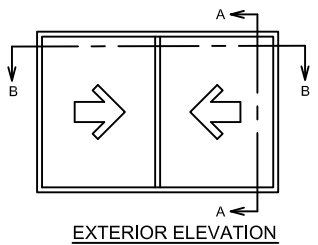
- NOTES:**
- (1) THIS PRODUCT IS DESIGNED TO COMPLY WITH THE 2007 FLORIDA BUILDING CODE AND THE 2009 SUPP.
  - (2) WINDOW AND VENT MATERIAL SHALL BE 6063-T5 ALUMINUM.
  - (3) SHIM AS REQ'D AT EACH SET OF INSTALLATION ANCHORS USING LOAD BEARING SHIMS. MAX. ALLOWABLE SHIM STACK TO BE 1/4". USE SHIMS WHERE SPACE GREATER THAN 1/16" IS PRESENT.
  - (4) ALUMINUM IN WHICH WINDOW IS TO BE INSTALLED MUST 6063-T5 OR EQUIVALENT YIELD STRENGTH AND MUST HAVE MINIMUM .040" WALL THICKNESS. STEEL MUST HAVE A .040" MIN. WALL THICKNESS.
  - (5) CAULK BEHIND FLANGE WITH LATEX CAULK. APPLICATION OF LATEX CAULK MUST COMPLY WITH SEALANT MANUFACTURERS RECOMMENDATIONS.
  - (6) AN APPROVED MEMBRANE OR MATERIAL SHALL BE PLACED BETWEEN ALL DISSIMILAR METALS TO CONTROL GALVANIC CORROSION.
  - (7) POSITIVE D.P. IS LIMITED BY WATER PRESSURE, NEGATIVE D.P. IS LIMITED BY 1.5 TIMES TESTED D.P.
  - (8) IF EXACT WINDOW SIZE IS NOT LISTED IN ANCHOR CHART, USE THE NEXT SIZE LARGER WINDOW FOR ANCHOR QUANTY.
  - (9) GLASS THICKNESS MAY VARY PER ASTM E-1300 GLASS CHART REQUIREMENTS. SINGLE GLAZED SHOWN, INSULATED GLASS ALSO QUALIFIED.
  - (10) JAMB / SILL CORNERS AND ALL ANCHORS TO BE SEALED WITH SMALL JOINT SEAM SEALANT.
  - (11) ALL INSTALLATION ANCHORS MUST BE MADE OF A CORROSION RESISTANT MATERIAL OR COATING.
  - (12) CALCULATIONS DERIVED FROM TESTED UNIT, TEST REPORT CTLA 1245W & CTLA 1245W-1.
  - (13) MAX. SPACING AT HEAD OR SILL CORNER IS 2".
  - (14) MAX. SPACING AT JAMB CORNER IS 2".
  - (15) MAX. SPACING ACROSS HEAD OR SILL IS 13-5/8".
  - (16) MAX. SPACING ACROSS JAMBS IS 14-3/4".

<b>WINDOW CRAFTSMEN, INC.</b>		
<b>SARASOTA, FLORIDA</b>		
TITLE: 40R/45R ALUMINUM HORIZONTAL SLIDER 4-TRACK I.M. OR O.M. INSTALLATION DETAILS IN ALUMINUM AND STEEL		
ENGINEER: MARK A. SMITH	DRAWN BY: MAS	DATE: 2/9/10
DISCIPLINE: CIVIL	SCALE: N.T.S.	DWG. NO. WCI-HS40/45-3
FL. REG. NO.: 55511	REV. LETTER:	SHEET 3

DESIGN PRESSURE RATING AND ANCHOR CHART

WINDOW SIZE (INCHES)	PRESSURE CAPACITY IN PSF		QUANTITY OF ANCHORS	
	EXTERIOR	INTERIOR	HD/SILL	JAMBS
30 x 36	+45	-45	3	3
30 x 48	+45	-45	3	4
30 x 60	+45	-45	3	5
30 x 63	+45	-45	3	5
30 x 72	+40	-40	3	6
36 x 36	+45	-45	4	3
36 x 48	+45	-45	4	4
36 x 60	+45	-45	4	5
36 x 63	+45	-45	4	5
36 x 72	+40	-40	4	6
42 x 36	+45	-45	4	3
42 x 48	+45	-45	4	4
42 x 60	+45	-45	4	5
42 x 63	+45	-45	4	5
42 x 72	+40	-40	4	6
48 x 36	+45	-45	5	3
48 x 48	+45	-45	5	4
48 x 60	+45	-45	5	5
48 x 63	+45	-45	5	5
48 x 72	+40	-40	5	6
54 x 36	+45	-45	5	3
54 x 48	+45	-45	5	4
54 x 60	+45	-45	5	5
54 x 63	+45	-45	5	5
54 x 72	+40	-40	5	6
60 x 36	+45	-45	6	3
60 x 48	+45	-45	6	4
60 x 60	+45	-45	6	5
60 x 63	+45	-45	6	5
60 x 72	+40	-40	6	6
66 x 36	+45	-45	6	4
66 x 48	+45	-45	6	5
66 x 60	+45	-45	6	5
66 x 63	+45	-45	6	5
66 x 72	+40	-40	6	6
72 x 36	+45	-45	6	3
72 x 48	+45	-45	6	4
72 x 60	+45	-45	6	5
72 x 63	+45	-45	6	5
72 x 72	+40	-40	6	6

NOTE: ANCHOR QUANTITIES ARE NOT TOTAL QUANTITIES BUT QUANTITIES PER SIDE



- NOTES:**
- (1) THIS PRODUCT IS DESIGNED TO COMPLY WITH THE 2007 FLORIDA BUILDING CODE AND THE 2009 SUPP.
  - (2) WINDOW AND VENT MATERIAL SHALL BE 6063-T5 ALUMINUM.
  - (3) SHIM AS REQ'D AT EACH SET OF INSTALLATION ANCHORS USING LOAD BEARING SHIMS. MAX. ALLOWABLE SHIM STACK TO BE 1/4". USE SHIMS WHERE SPACE GREATER THAN 1/16" IS PRESENT.
  - (4) INSTALLATION ANCHORS, #10 WOOD SCREWS FOR WOOD FRAMING WITH SUFFICIENT LENGTH TO ACHIEVE A MINIMUM EMBEDMENT OF 1 1/2" INTO THE WOOD FRAMING
  - (5) USE 3/16" DIAMETER TAPCONS FOR CONCRETE OR MASONRY WITH A SUFFICIENT LENGTH TO ACHIEVE A MINIMUM OF 1 1/4" EMBEDMENT INTO CONCRETE OR MASONRY AND 2" MIN. EDGE DISTANCE.
  - (6) CAULK BEHIND FLANGE WITH LATEX CAULK. APPLICATION OF LATEX CAULK MUST COMPLY WITH SEALANT MANUFACTURERS RECOMMENDATIONS.
  - (7) AN APPROVED MEMBRANE OR MATERIAL SHALL BE PLACED BETWEEN ALL DISSIMILAR METALS TO CONTROL GALVANIC CORROSION.
  - (8) POSITIVE D.P. IS LIMITED BY WATER PRESSURE, NEGATIVE D.P. IS LIMITED BY 1.5 TIMES TESTED D.P.
  - (9) IF EXACT WINDOW SIZE IS NOT LISTED IN ANCHOR CHART, USE THE NEXT SIZE LARGER WINDOW FOR ANCHOR QUANTITY.
  - (10) GLASS THICKNESS MAY VARY PER ASTM E-1300 GLASS CHART REQUIREMENTS. SINGLE GLAZED SHOWN, INSULATED GLASS ALSO QUALIFIED.
  - (11) JAMB / SILL CORNERS AND ALL ANCHORS TO BE SEALED WITH SMALL JOINT SEAM SEALANT.
  - (12) ALL INSTALLATION ANCHORS MUST BE MADE OF A CORROSION RESISTANT MATERIAL OR COATING.
  - (13) CALCULATIONS DERIVED FROM TESTED UNIT, TEST REPORTS # CLTA 1245W & # CLTA 1245W-1.
  - (14) MAX. SPACING AT HEAD OR SILL CORNER IS 2".
  - (15) MAX. SPACING AT JAMB CORNER IS 2"
  - (16) MAX. SPACING ACROSS HEAD OR SILL IS 13-5/8".
  - (17) MAX. SPACING ACROSS JAMBS IS 14-3/4".

**WINDOW CRAFTSMEN, INC.**  
SARASOTA, FLORIDA

TITLE:  
40R/45R ALUMINUM HORIZONTAL SLIDER  
2-TRACK I.M. OR O.M. INSTALLATION DETAILS  
IN WOOD BUCK AND CONCRETE

ENGINEER: MARK A. SMITH    DRAWN BY: MAS    DATE: 2/9/10

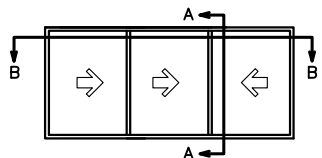
DISCIPLINE: CIVIL    SCALE: N.T.S.    DWG. NO. WCI-HS40/45-4

FL. REG. NO.: 55511    REV. LETTER:    SHEET 4

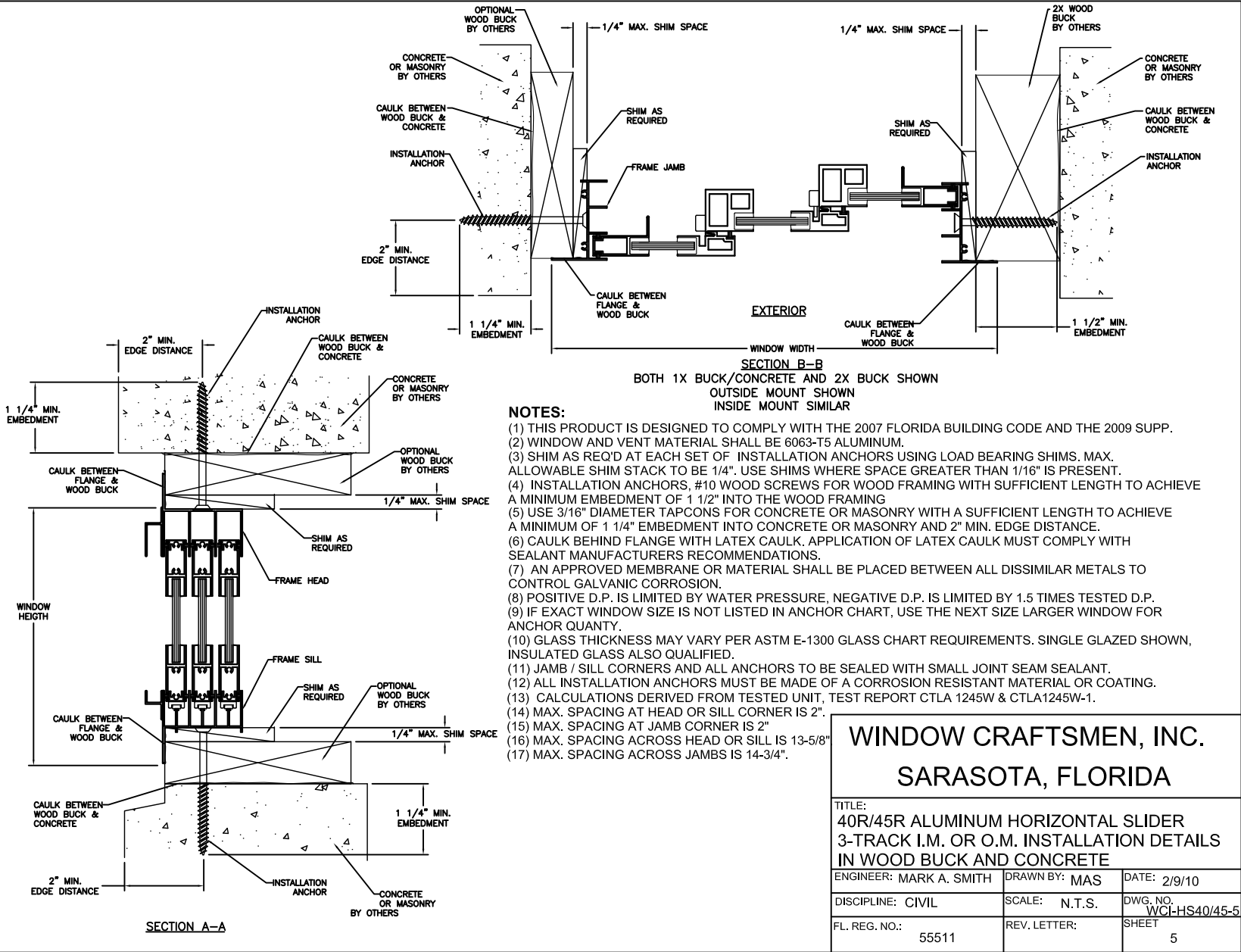
DESIGN PRESSURE RATING AND ANCHOR CHART

WINDOW SIZE (INCHES)	PRESSURE CAPACITY IN PSF		QUANTITY OF ANCHORS	
	EXTERIOR	INTERIOR	HD/SILL	JAMBS
54 X 36	+45	-45	5	3
54 X 48	+45	-45	5	4
54 X 60	+45	-45	5	5
54 X 63	+45	-45	5	5
54 X 72	+40	-40	5	6
60 X 36	+45	-45	6	3
60 X 48	+45	-45	6	4
60 X 60	+45	-45	6	5
60 X 63	+45	-45	6	5
60 X 72	+40	-40	6	6
66 X 36	+45	-45	6	3
66 X 48	+45	-45	6	4
66 X 60	+45	-45	6	5
66 X 63	+45	-45	6	5
66 X 72	+40	-40	6	6
72 X 36	+45	-45	6	3
72 X 48	+45	-45	6	4
72 X 60	+45	-45	6	5
72 X 63	+45	-45	6	5
72 X 72	+40	-40	6	6
78 X 36	+45	-45	7	3
78 X 48	+45	-45	7	4
78 X 60	+45	-45	7	5
78 X 63	+45	-45	7	5
78 X 72	+40	-40	7	6
84 X 36	+45	-45	7	3
84 X 48	+45	-45	7	4
84 X 60	+45	-45	7	5
84 X 63	+45	-45	7	5
84 X 72	+40	-40	7	6
96 X 36	+45	-45	8	3
96 X 48	+45	-45	8	4
96 X 60	+45	-45	8	5
96 X 63	+45	-45	8	5
96 X 72	+40	-40	8	6
108 X 36	+45	-45	9	3
108 X 48	+45	-45	9	4
108 X 60	+45	-45	9	5
108 X 63	+45	-45	9	5
108 X 72	+40	-40	9	6

NOTE: ANCHOR QUANTITIES ARE NOT TOTAL QUANTITIES BUT QUANTITIES PER SIDE



EXTERIOR ELEVATION



NOTES:

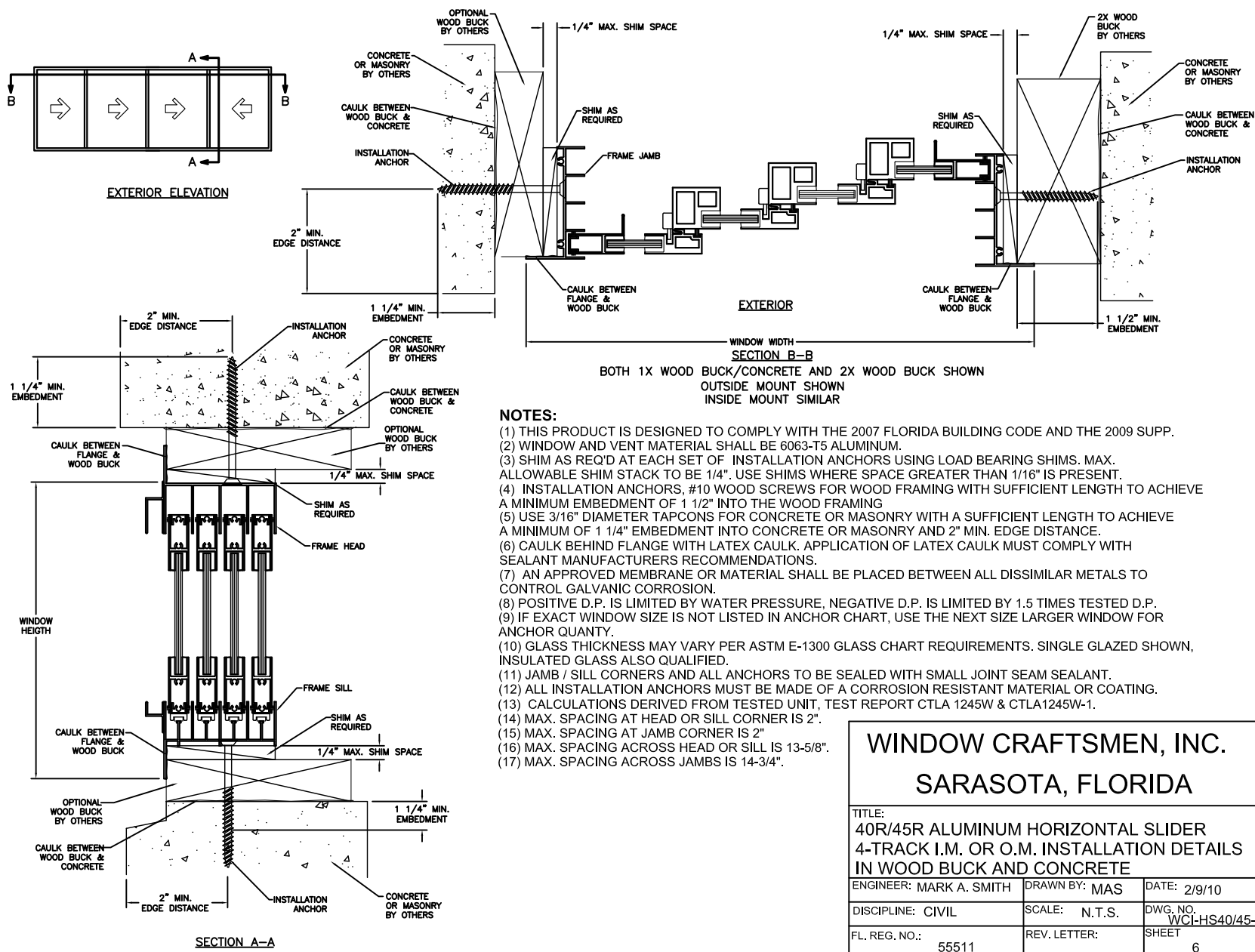
- (1) THIS PRODUCT IS DESIGNED TO COMPLY WITH THE 2007 FLORIDA BUILDING CODE AND THE 2009 SUPP.
- (2) WINDOW AND VENT MATERIAL SHALL BE 6063-T5 ALUMINUM.
- (3) SHIM AS REQ'D AT EACH SET OF INSTALLATION ANCHORS USING LOAD BEARING SHIMS. MAX. ALLOWABLE SHIM STACK TO BE 1/4". USE SHIMS WHERE SPACE GREATER THAN 1/16" IS PRESENT.
- (4) INSTALLATION ANCHORS, #10 WOOD SCREWS FOR WOOD FRAMING WITH SUFFICIENT LENGTH TO ACHIEVE A MINIMUM EMBEDMENT OF 1 1/2" INTO THE WOOD FRAMING
- (5) USE 3/16" DIAMETER TAPCONS FOR CONCRETE OR MASONRY WITH A SUFFICIENT LENGTH TO ACHIEVE A MINIMUM OF 1 1/4" EMBEDMENT INTO CONCRETE OR MASONRY AND 2" MIN. EDGE DISTANCE.
- (6) CAULK BEHIND FLANGE WITH LATEX CAULK. APPLICATION OF LATEX CAULK MUST COMPLY WITH SEALANT MANUFACTURERS RECOMMENDATIONS.
- (7) AN APPROVED MEMBRANE OR MATERIAL SHALL BE PLACED BETWEEN ALL DISSIMILAR METALS TO CONTROL GALVANIC CORROSION.
- (8) POSITIVE D.P. IS LIMITED BY WATER PRESSURE, NEGATIVE D.P. IS LIMITED BY 1.5 TIMES TESTED D.P.
- (9) IF EXACT WINDOW SIZE IS NOT LISTED IN ANCHOR CHART, USE THE NEXT SIZE LARGER WINDOW FOR ANCHOR QUANTITY.
- (10) GLASS THICKNESS MAY VARY PER ASTM E-1300 GLASS CHART REQUIREMENTS. SINGLE GLAZED SHOWN, INSULATED GLASS ALSO QUALIFIED.
- (11) JAMB / SILL CORNERS AND ALL ANCHORS TO BE SEALED WITH SMALL JOINT SEAM SEALANT.
- (12) ALL INSTALLATION ANCHORS MUST BE MADE OF A CORROSION RESISTANT MATERIAL OR COATING.
- (13) CALCULATIONS DERIVED FROM TESTED UNIT, TEST REPORT CTLA 1245W & CTLA1245W-1.
- (14) MAX. SPACING AT HEAD OR SILL CORNER IS 2".
- (15) MAX. SPACING AT JAMB CORNER IS 2"
- (16) MAX. SPACING ACROSS HEAD OR SILL IS 13-5/8"
- (17) MAX. SPACING ACROSS JAMBS IS 14-3/4".

**WINDOW CRAFTSMEN, INC.**  
SARASOTA, FLORIDA

TITLE: 40R/45R ALUMINUM HORIZONTAL SLIDER 3-TRACK I.M. OR O.M. INSTALLATION DETAILS IN WOOD BUCK AND CONCRETE		
ENGINEER: MARK A. SMITH	DRAWN BY: MAS	DATE: 2/9/10
DISCIPLINE: CIVIL	SCALE: N.T.S.	DWG. NO. WCI-HS40/45-5
FL. REG. NO.: 55511	REV. LETTER:	SHEET 5

DESIGN PRESSURE RATING AND ANCHOR CHART					
WINDOW SIZE (INCHES)	PRESSURE CAPACITY IN PSF		QUANTITY OF ANCHORS		
	EXTERIOR	INTERIOR	HD/SILL	JAMBS	
54 X 36	+45	-45	5	5	3
54 X 48	+45	-45	5	5	3
54 X 60	+45	-45	5	5	3
54 X 63	+45	-45	5	5	3
54 X 72	+40	-40	5	5	6
66 X 36	+45	-45	6	6	3
66 X 48	+45	-45	6	6	3
66 X 60	+45	-45	6	6	3
66 X 63	+45	-45	6	6	3
66 X 72	+40	-40	6	6	6
78 X 36	+45	-45	7	7	3
78 X 48	+45	-45	7	7	4
78 X 60	+45	-45	7	7	4
78 X 63	+45	-45	7	7	4
78 X 72	+40	-40	7	7	6
96 X 36	+45	-45	8	8	3
96 X 48	+45	-45	8	8	3
96 X 60	+45	-45	8	8	3
96 X 63	+45	-45	8	8	3
96 X 72	+40	-40	8	8	6
109 X 36	+45	-45	9	9	3
109 X 48	+45	-45	9	9	4
109 X 60	+45	-45	9	9	4
109 X 63	+45	-45	9	9	4
109 X 72	+40	-40	9	9	6
118 X 36	+45	-45	10	10	3
118 X 48	+45	-45	10	10	4
118 X 60	+45	-45	10	10	4
118 X 63	+45	-45	10	10	4
118 X 72	+40	-40	10	10	6
128 X 36	+45	-45	11	11	3
128 X 48	+45	-45	11	11	4
128 X 60	+45	-45	11	11	4
128 X 63	+45	-45	11	11	4
128 X 72	+40	-40	11	11	6
144 X 36	+45	-45	12	12	3
144 X 48	+45	-45	12	12	4
144 X 60	+45	-45	12	12	4
144 X 63	+45	-45	12	12	4
144 X 72	+40	-40	12	12	6

NOTE: ANCHOR QUANTITIES ARE NOT TOTAL QUANTITIES BUT QUANTITIES PER SIDE



- NOTES:**
- (1) THIS PRODUCT IS DESIGNED TO COMPLY WITH THE 2007 FLORIDA BUILDING CODE AND THE 2009 SUPP.
  - (2) WINDOW AND VENT MATERIAL SHALL BE 6063-T5 ALUMINUM.
  - (3) SHIM AS REQ'D AT EACH SET OF INSTALLATION ANCHORS USING LOAD BEARING SHIMS. MAX. ALLOWABLE SHIM STACK TO BE 1/4". USE SHIMS WHERE SPACE GREATER THAN 1/16" IS PRESENT.
  - (4) INSTALLATION ANCHORS, #10 WOOD SCREWS FOR WOOD FRAMING WITH SUFFICIENT LENGTH TO ACHIEVE A MINIMUM EMBEDMENT OF 1 1/2" INTO THE WOOD FRAMING
  - (5) USE 3/16" DIAMETER TAPCONS FOR CONCRETE OR MASONRY WITH A SUFFICIENT LENGTH TO ACHIEVE A MINIMUM OF 1 1/4" EMBEDMENT INTO CONCRETE OR MASONRY AND 2" MIN. EDGE DISTANCE.
  - (6) CAULK BEHIND FLANGE WITH LATEX CAULK. APPLICATION OF LATEX CAULK MUST COMPLY WITH SEALANT MANUFACTURERS RECOMMENDATIONS.
  - (7) AN APPROVED MEMBRANE OR MATERIAL SHALL BE PLACED BETWEEN ALL DISSIMILAR METALS TO CONTROL GALVANIC CORROSION.
  - (8) POSITIVE D.P. IS LIMITED BY WATER PRESSURE, NEGATIVE D.P. IS LIMITED BY 1.5 TIMES TESTED D.P.
  - (9) IF EXACT WINDOW SIZE IS NOT LISTED IN ANCHOR CHART, USE THE NEXT SIZE LARGER WINDOW FOR ANCHOR QUANTY.
  - (10) GLASS THICKNESS MAY VARY PER ASTM E-1300 GLASS CHART REQUIREMENTS. SINGLE GLAZED SHOWN, INSULATED GLASS ALSO QUALIFIED.
  - (11) JAMB / SILL CORNERS AND ALL ANCHORS TO BE SEALED WITH SMALL JOINT SEAM SEALANT.
  - (12) ALL INSTALLATION ANCHORS MUST BE MADE OF A CORROSION RESISTANT MATERIAL OR COATING.
  - (13) CALCULATIONS DERIVED FROM TESTED UNIT, TEST REPORT CTLA 1245W & CTLA1245W-1.
  - (14) MAX. SPACING AT HEAD OR SILL CORNER IS 2".
  - (15) MAX. SPACING AT JAMB CORNER IS 2"
  - (16) MAX. SPACING ACROSS HEAD OR SILL IS 13-5/8".
  - (17) MAX. SPACING ACROSS JAMBS IS 14-3/4".

**WINDOW CRAFTSMEN, INC.**  
**SARASOTA, FLORIDA**

TITLE:  
 40R/45R ALUMINUM HORIZONTAL SLIDER  
 4-TRACK I.M. OR O.M. INSTALLATION DETAILS  
 IN WOOD BUCK AND CONCRETE

ENGINEER: MARK A. SMITH	DRAWN BY: MAS	DATE: 2/9/10
DISCIPLINE: CIVIL	SCALE: N.T.S.	DWG. NO. WCI-HS40/45-6
FL. REG. NO.: 55511	REV. LETTER:	SHEET 6